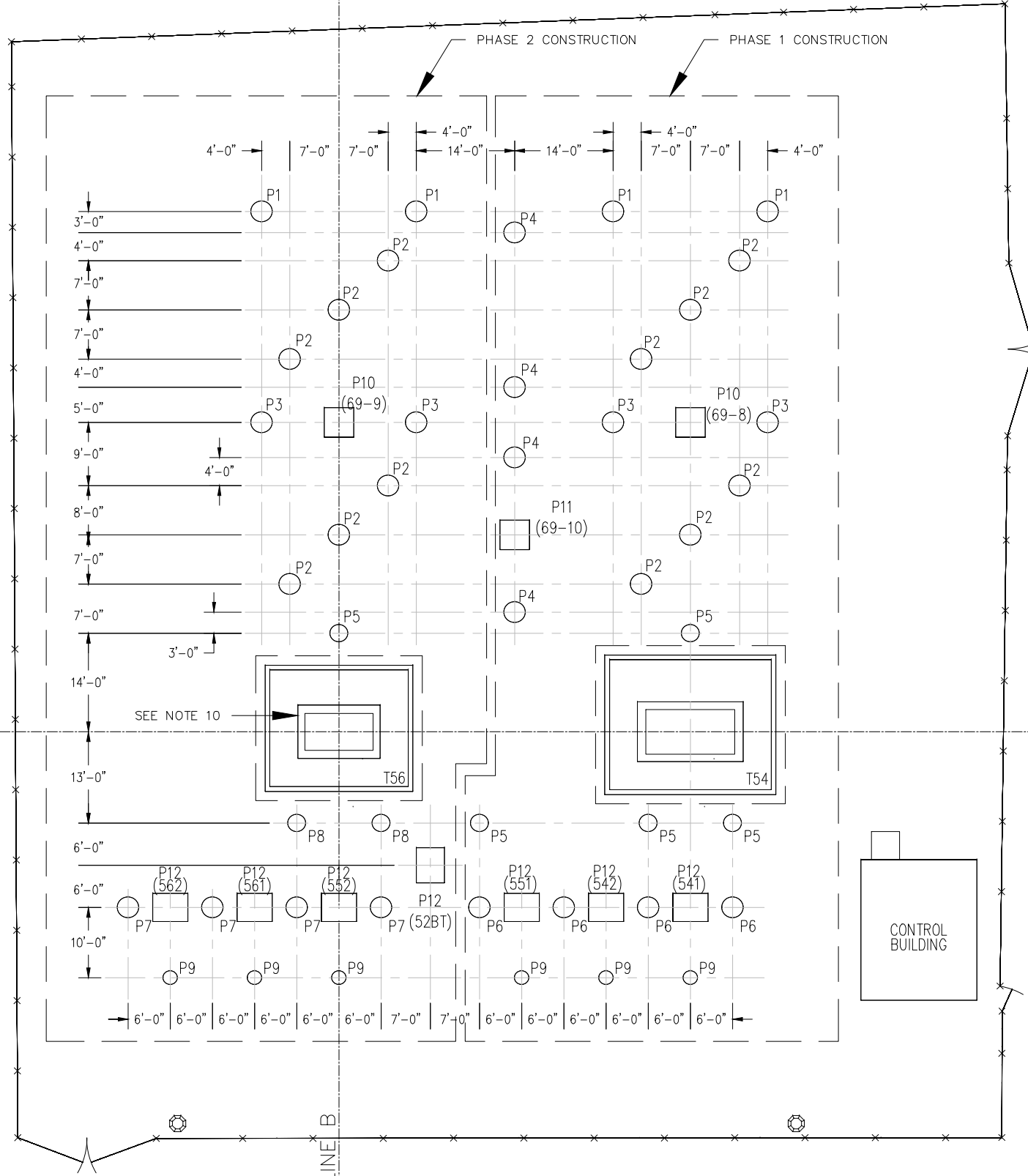


RICKWALES - 5/12/2022 - 16:57 - C:\USERS\RICKWALES\ONEDRIVE - POWER CENTRIC SOLUTIONS\WORK PRODUCTS\CAD\1125-03-400.DWG : LAYOUT

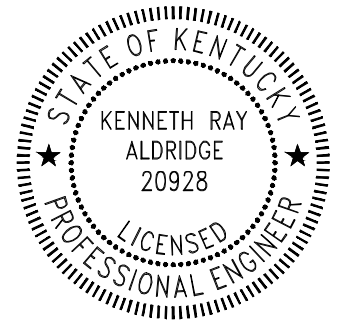
BASELINE A

BASELINE B



NOTES

1. REFER TO SUBSTATION ENTERPRISES DRAWINGS GK-6134-AB1, GK-6134-AB2, AND GK-6134-FD1 FOR ANCHOR BOLT LAYOUT AND DRILLED PIER FOUNDATION DETAILS.
2. REFER TO SUBSTATION ENTERPRISES DRAWING GK-6134-FD3 FOR 69KV CIRCUIT BREAKER 69-10 FOUNDATION DETAILS.
3. REFER TO SUBSTATION ENTERPRISES DRAWING GK-6134-FD2 FOR 69KV CIRCUIT BREAKERS 69-8, & 69-9 FOUNDATION DETAILS.
4. REFER TO DRAWING 1125-03-403 FOR TRANSFORMER T56 FOUNDATION DETAILS.
5. REFER TO DRAWING 1125-03-404 FOR TRANSFORMER T54 FOUNDATION DETAILS.
6. REFER TO DRAWING GK-6134-FD4 FOR 12KV CIRCUIT BREAKERS 541, 542, 551, 52BT, 552, 561, & 562 FOUNDATION DETAILS.
7. TOP OF CONCRETE ELEVATIONS (TOC) SHALL MATCH EXISTING TRANSFORMER T56.
8. DIMENSIONS ARE TO THE CENTER OF BASEPLATES WHICH IS ALSO THE CENTER OF DRILLED PIER TOP OR FOUNDATION PEDESTAL.
9. WORK SHALL BE EXECUTED IN PHASES AS SHOWN.
10. EXISTING TRANSFORMER T56 FOUNDATION TO REMAIN. NEW OIL CONTAINMENT APRON TO BE INSTALLED.



ISSUED FOR
BIDDING ONLY
NOT FOR
CONSTRUCTION



REV	DATE	CHK'D	APP'D	REVISION DESCRIPTION
0	05.17.22	KRA	KRA	ISSUED FOR BIDS

FRANKFORT PLANT BOARD
FRANKFORT, KY
CAPITAL PLAZA SUBSTATION

FOUNDATION PLAN
(ADDITION)

DRAW:	AWS
CHK'D:	KRA
APP'D:	DKD
SCALE:	1"=20' (11X17")
DATE:	03.11.22
DRAWING NUMBER:	1125-03-400

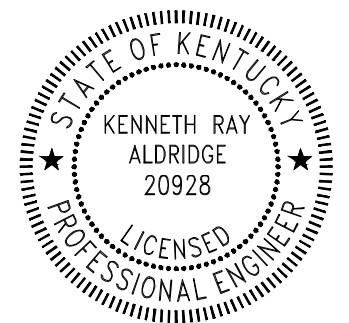
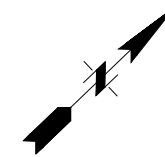
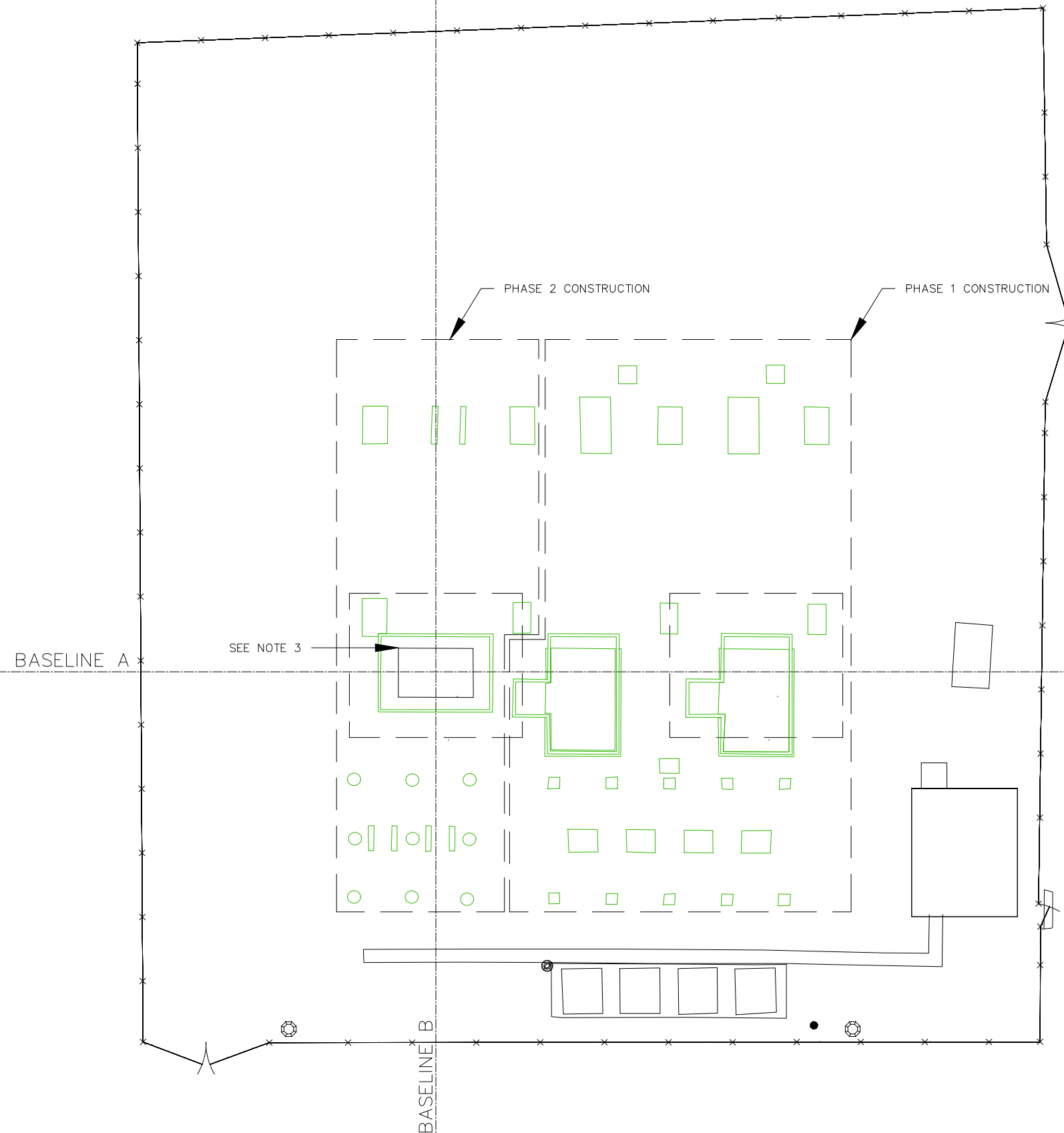
RICKWALES - 5/9/2022 - 07:44 - C:\USERS\RICKWALES\ONEDRIVE - POWER CENTRIC SOLUTIONS\SHARED DOCUMENTS\FRANKFORT KY 1125\1125-03 CAPITAL PLAZA SUBSTATION\WORK PRODUCTS\CAD\1125-03-400R.DWG : LAYOUT1

LEGEND:

- EXISTING
- REMOVE

NOTES

1. REMOVE EXISTING FOUNDATIONS AS SHOWN.
2. WORK SHALL BE EXECUTED IN PHASES AS SHOWN.
3. EXISTING TRANSFORMER T56 FOUNDATION TO REMAIN. EXISTING OIL CONTAINMENT APRON TO BE REMOVED.



ISSUED FOR
BIDDING ONLY
NOT FOR
CONSTRUCTION



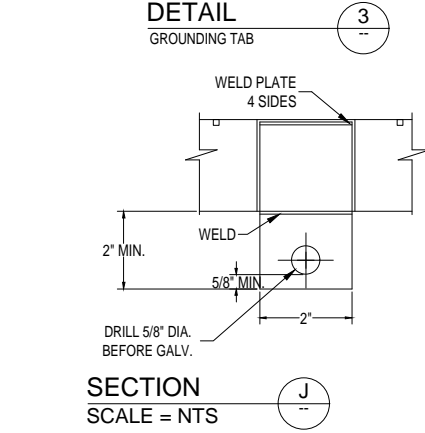
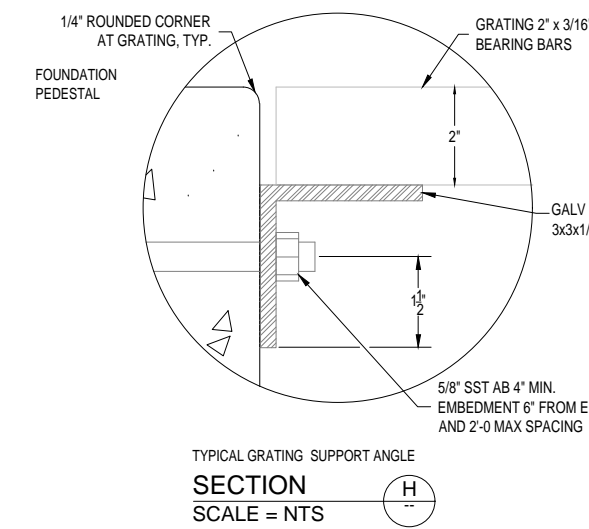
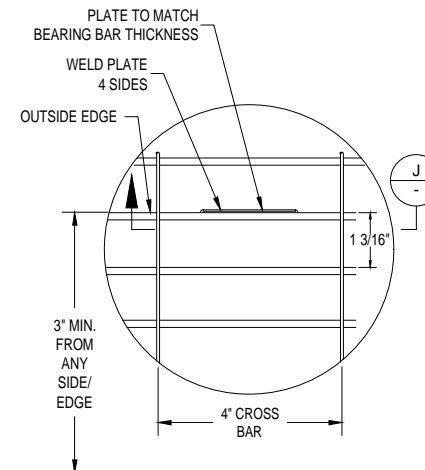
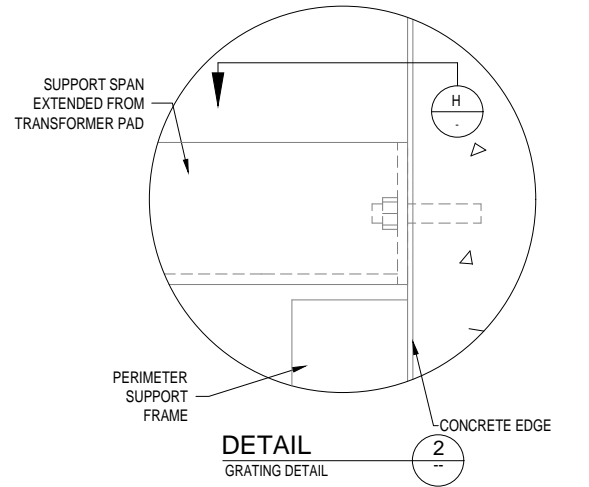
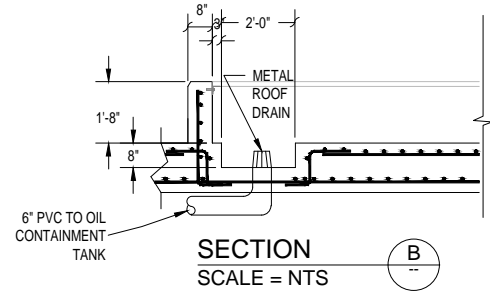
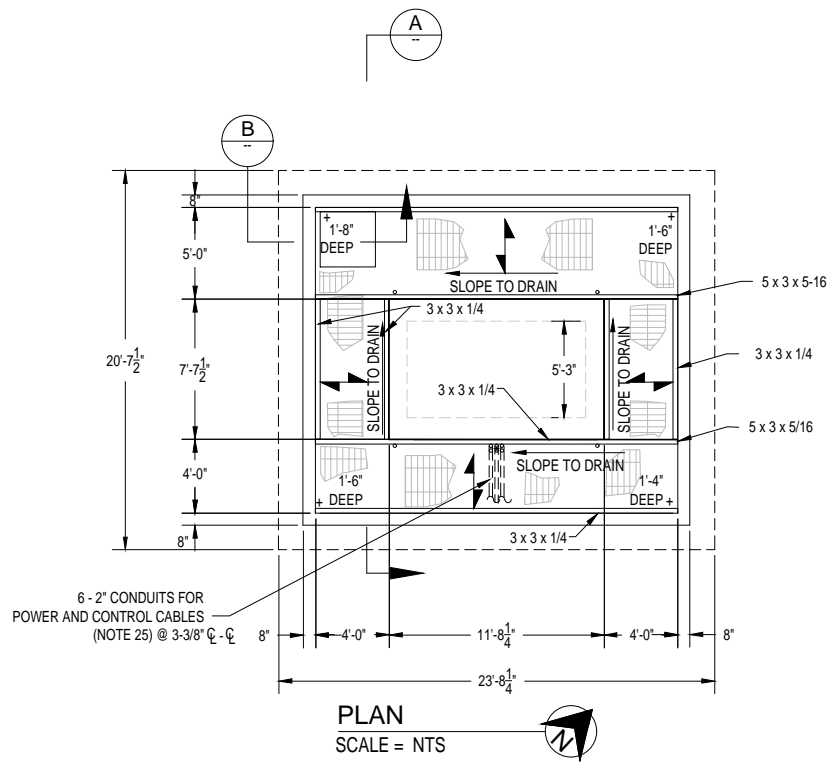
REV	DATE	CHK'D	APP'D	REVISION DESCRIPTION
0	05.17.22	KRA	KRA	ISSUED FOR BIDS

FRANKFORT PLANT BOARD
FRANKFORT, KY
CAPITAL PLAZA SUBSTATION

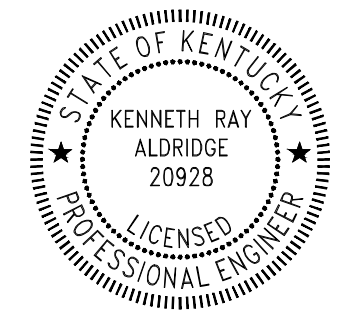
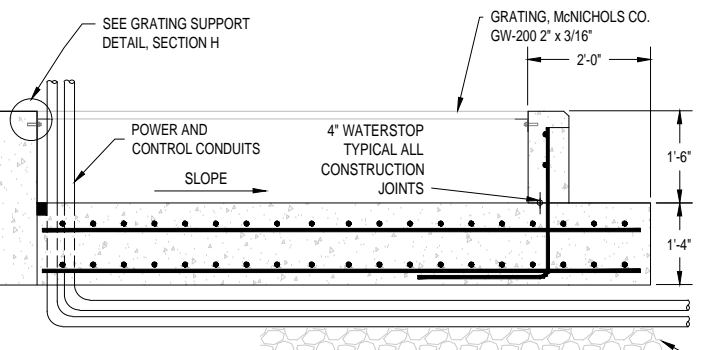
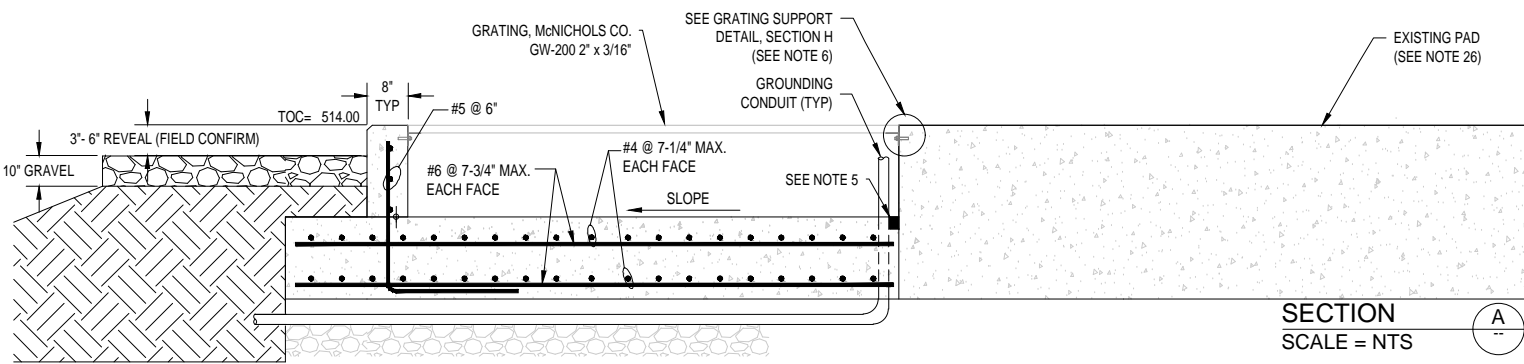
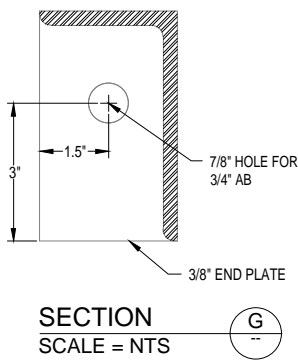
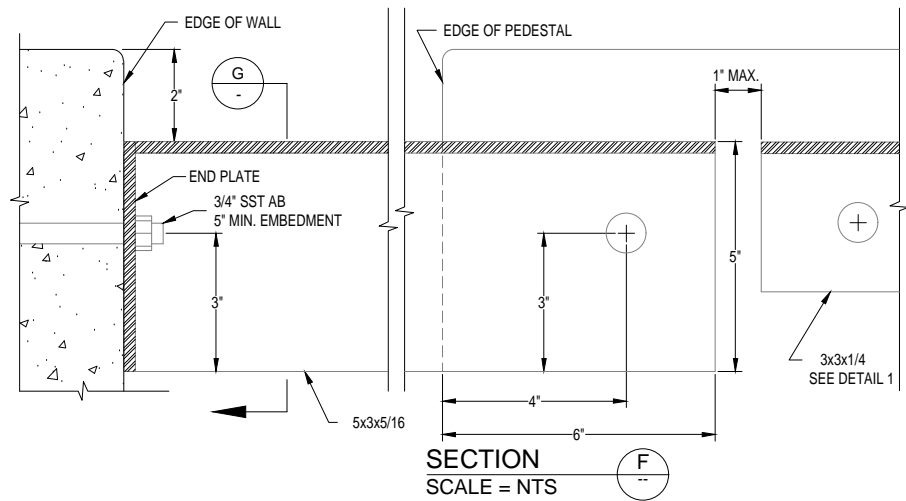
FOUNDATION PLAN
(REMOVAL)

DRAW:	AWS
CHK'D:	KRA
APP'D:	DKD
SCALE:	1"=20' (11X17")
DATE:	03.11.22
DRAWING NUMBER:	1125-03-400R

RICKWALES - 5/13/2022 - 07:33 - C:USERS\RICKWALES\ONEDRIVE - POWER CENTRIC SOLUTIONS\POWER CENTRIC SOLUTIONS\SHARED DOCUMENTS\FRANKFORT KY 1125\1125-03 CAPITAL PLAZA SUBSTATION\WORK PRODUCTS\CAD\1125-03-403.DWG : LAYOUT1



- NOTES:**
- CONCRETE AGGREGATE:
 - 2" MAX IN FOOTING AND PAD
 - 1 1/2" MAX IN CURBS.
 - CONCRETE REINFORCING STEEL: ASTM A-615, GRADE 60.
 - CONCRETE COMPRESSIVE STRENGTH: 4,000 PSI.
 - ALL EXPOSED CONCRETE TO RECEIVE BROOM FINISH.
 - PROVIDE WATERSTOP AT ALL JOINTS IN THE OIL CONTAINMENT BASIN WALLS. USE SIKA SWELLSTOP FOR COLD JOINT EXTENSION.
 - CHAMFER ALL EXPOSED EDGES 1". FILLET ALL EDGES ADJACENT TO GRATING WITH 1/4" ROUNDED CORNERS.
 - NOT ALL REINFORCING BARS SHOWN FOR CLARITY.
 - ALL REINFORCING BARS 3" CLEAR SPACING BOTTOM AND UNFORMED SIDES, 2" CLEAR SPACING TOP AND ANY FORMED SIDES, TYPICAL.
 - SLOPE CATCHMENT AREA TOWARDS OUTLET PIPE AT 0.5%.
 - NOT USED.
 - CAULK JOINTS WHERE WATER STOP IS DISCONTINUOUS DUE TO PIPE PENETRATION AND AROUND PIPE.
 - COMPACT SUBGRADE TO 98% MAXIMUM DENSITY, +/- 2% OF OPTIMUM MOISTURE PER ASTM D698.
 - BAR GRATING AND ALL EXPOSED STEEL TO BE GALVANIZED.
 - MISCELLANEOUS STEEL: ASTM A-36, HOT DIP GALVANIZED AFTER FABRICATION.
 - ALL CONDUIT TO BE PVC, SCHEDULE 40 BELOW GRADE AND SCHEDULE 80 ABOVE GRADE.
 - MINIMIZE NUMBER OF CONDUIT SPLICES IN OIL CONTAINMENT AREA.
 - GRATING IN AREA OVER SUMP TO BE REMOVABLE SEPARATELY FROM OTHER GRATING SECTIONS.
 - ALL DRAIN PIPES SHALL BE 6" PVC AS SHOWN.
 - COLD GALVANIZE ALL FIELD WELDS.
 - PROVIDE POSITIVE DRAINAGE TO SUMP AREA TO PREVENT WATER ACCUMULATIONS.
 - SEE 1125-03-505 FOR GROUNDING OF BAR GRATING.
 - GRATE GROUNDING BAR ADDED BY MANUFACTURER OR CONTRACTOR WELDED. ADD ONE BAR FOR EACH SECTION OF GRATING FOR TERMINATING GROUND CONDUCTOR.
 - ALL GRATING SECTIONS SHALL HAVE EDGE BANDS, INCLUDE CLIP HARDWARE AND BE SECURELY FASTENED OVER PIT.
 - BAR GRATING SHALL BE IN SECTIONS OF 250 LBS OR LESS.
 - PROVIDE 13" x 7" RECTANGULAR BLOCK-OUT FOR POWER, CONTROL, AND CT CONDUIT PENETRATIONS. CAP CUT BEARING BARS WITH 2" x 3/16" INTERIOR EDGE BANDS.
 - EXISTING FOUNDATION DIMENSIONS ARE NOT EXACT. FIELD VERIFY ALL DIMENSIONS PRIOR TO GRATING SUPPORT FABRICATION.



**ISSUED FOR BIDDING ONLY
NOT FOR CONSTRUCTION**



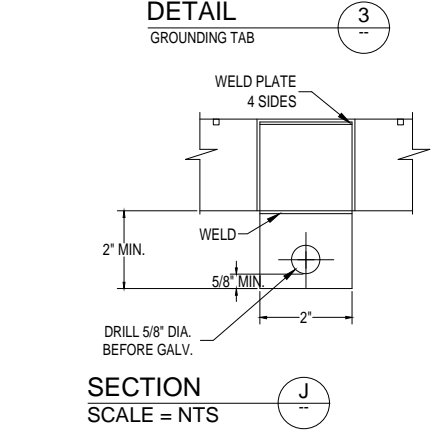
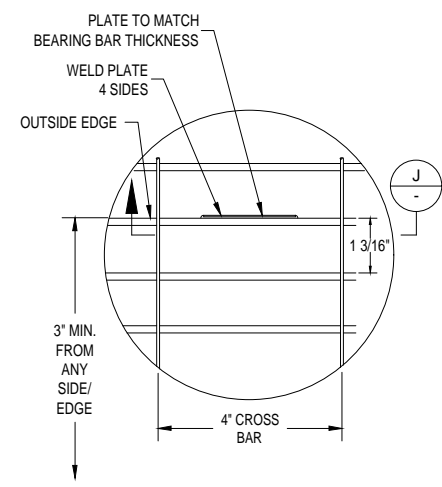
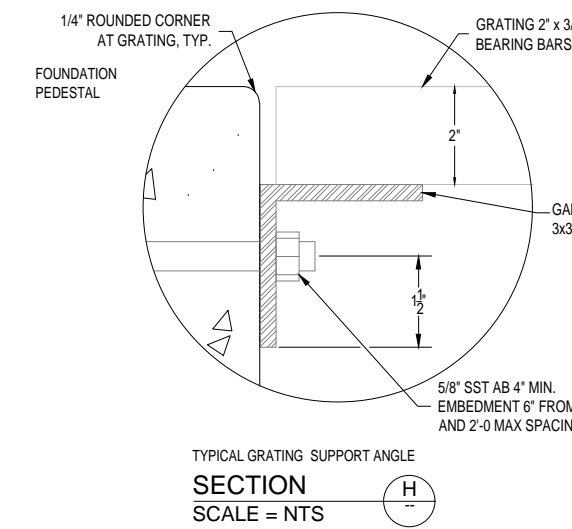
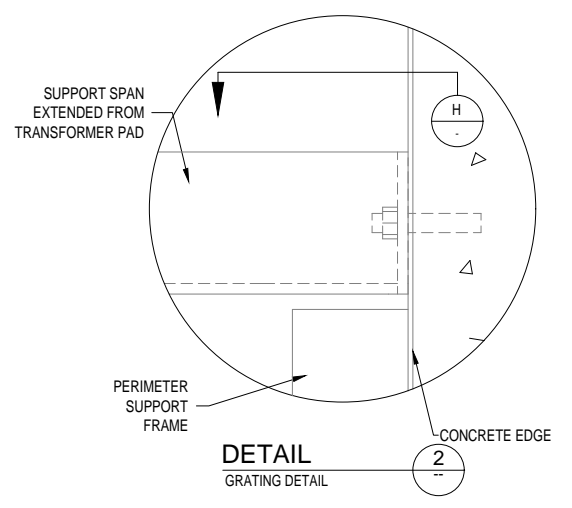
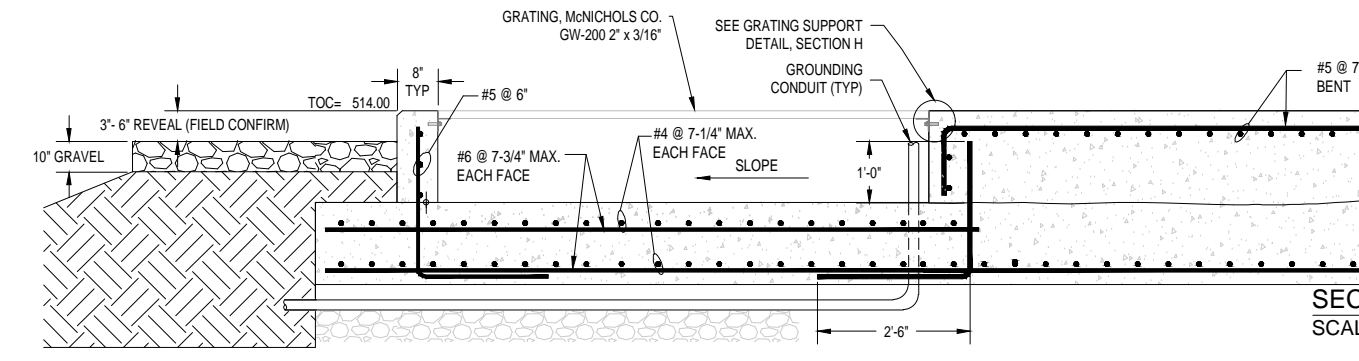
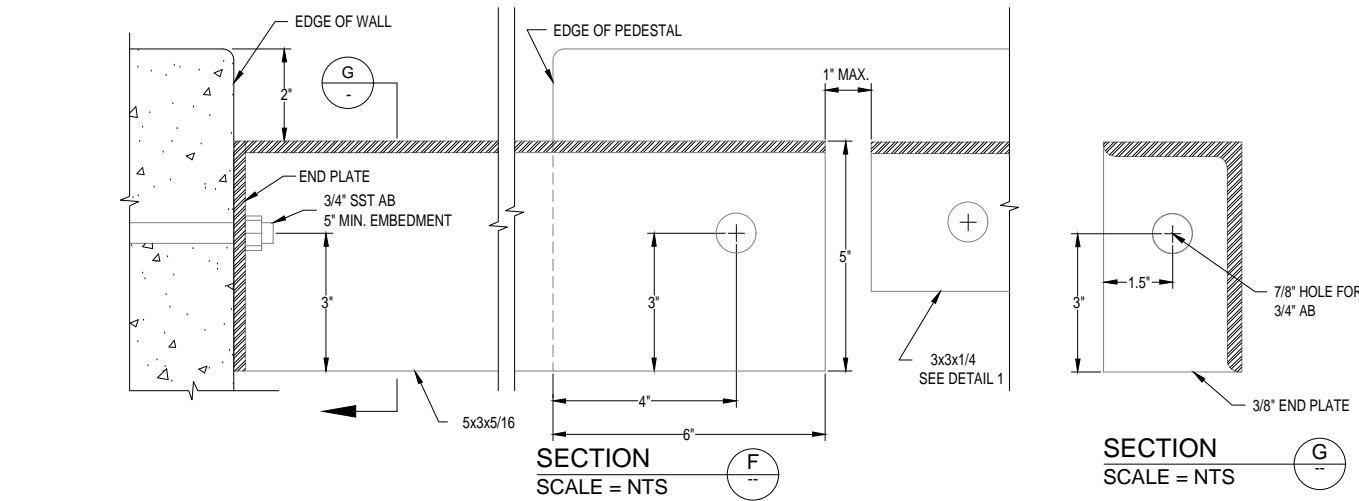
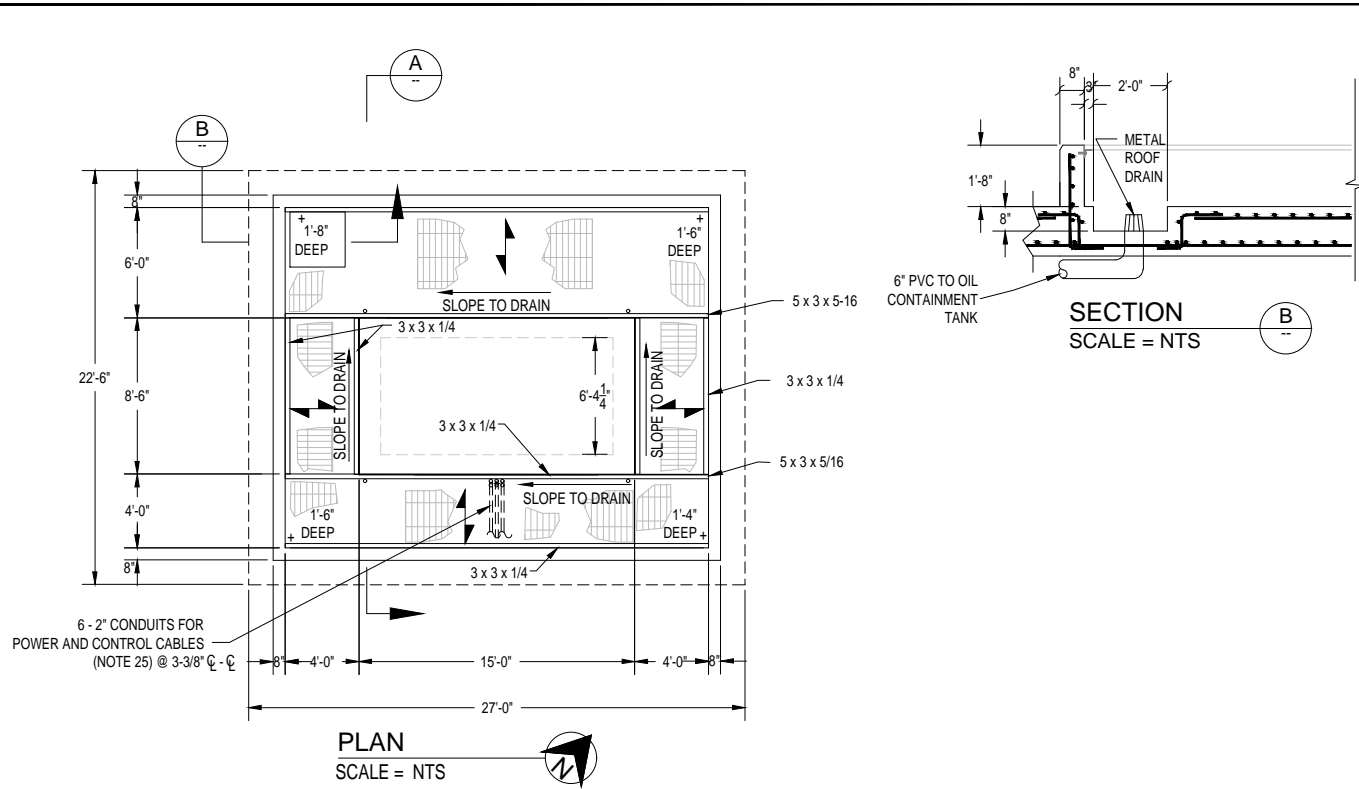
REV	DATE	CHK'D	APP'D	REVISION DESCRIPTION
0	05.17.22	KRA	KRA	ISSUED FOR BIDS

FRANKFORT PLANT BOARD
FRANKFORT, KY
CAPITAL PLAZA SUBSTATION

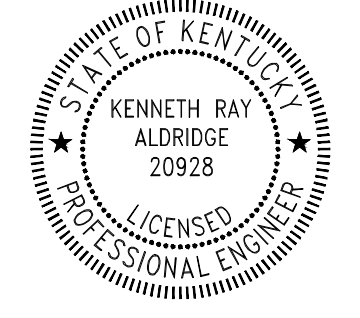
TRANSFORMER T56 (CGP)
FOUNDATION
AND OIL CONTAINMENT DETAILS

DRAW:	AW5
CHK'D:	KRA
APP'D:	DKD
SCALE:	NTS
DATE:	03.23.22
DRAWING NUMBER:	1125-03-403

RICKWALES - 5/12/2022 - 14:14 - C:\USERS\RICKWALES\ONE DRIVE - POWER CENTRIC SOLUTIONS\SHARED DOCUMENTS\FRANKFORT KY 1125\1125-03 CAPITAL PLAZA SUBSTATION\WORK PRODUCTS\CAD\1125-03-404.DWG : LAYOUT



- NOTES:**
- CONCRETE AGGREGATE:
 - 2" MAX IN FOOTING AND PAD
 - 1 1/2" MAX IN CURBS.
 - CONCRETE REINFORCING STEEL: ASTM A-615, GRADE 60.
 - CONCRETE COMPRESSIVE STRENGTH: 4,000 PSI.
 - ALL EXPOSED CONCRETE TO RECEIVE BROOM FINISH.
 - PROVIDE WATERSTOP AT ALL JOINTS IN THE OIL CONTAINMENT BASIN WALLS.
 - CHAMFER ALL EXPOSED EDGES 1". FILLET ALL EDGES ADJACENT TO GRATING WITH 1/4" ROUNDED CORNERS.
 - NOT ALL REINFORCING BARS SHOWN FOR CLARITY.
 - ALL REINFORCING BARS 3" CLEAR SPACING BOTTOM AND UNFORMED SIDES, 2" CLEAR SPACING TOP AND ANY FORMED SIDES, TYPICAL.
 - SLOPE CATCHMENT AREA TOWARDS OUTLET PIPE AT 0.5%.
 - NOT USED.
 - CAULK JOINTS WHERE WATER STOP IS DISCONTINUOUS DUE TO PIPE PENETRATION AND AROUND PIPE.
 - COMPACT SUBGRADE TO 98% MAXIMUM DENSITY, +/- 2% OF OPTIMUM MOISTURE PER ASTM D698.
 - BAR GRATING AND ALL EXPOSED STEEL TO BE GALVANIZED.
 - MISCELLANEOUS STEEL: ASTM A-36, HOT DIP GALVANIZED AFTER FABRICATION.
 - ALL CONDUIT TO BE PVC, SCHEDULE 40 BELOW GRADE AND SCHEDULE 80 ABOVE GRADE.
 - MINIMIZE NUMBER OF CONDUIT SPLICES IN OIL CONTAINMENT AREA.
 - GRATING IN AREA OVER SUMP TO BE REMOVABLE SEPARATELY FROM OTHER GRATING SECTIONS.
 - ALL DRAIN PIPES SHALL BE 6" PVC AS SHOWN.
 - COLD GALVANIZE ALL FIELD WELDS.
 - PROVIDE POSITIVE DRAINAGE TO SUMP AREA TO PREVENT WATER ACCUMULATIONS.
 - SEE 1125-03-505 FOR GROUNDING OF BAR GRATING.
 - GRATE GROUNDING BAR ADDED BY MANUFACTURER OR CONTRACTOR WELDED. ADD ONE BAR FOR EACH SECTION OF GRATING FOR TERMINATING GROUND CONDUCTOR.
 - ALL GRATING SECTIONS SHALL HAVE EDGE BANDS, INCLUDE CLIP HARDWARE AND BE SECURELY FASTENED OVER PIT.
 - BAR GRATING SHALL BE IN SECTIONS OF 250 LBS OR LESS.
 - PROVIDE 13" x 7" RECTANGULAR BLOCK-OUT FOR POWER, CONTROL, AND CT CONDUIT PENETRATIONS. CAP CUT BEARING BARS WITH 2" x 3/16" INTERIOR EDGE BANDS.



ISSUED FOR BIDDING ONLY
NOT FOR CONSTRUCTION

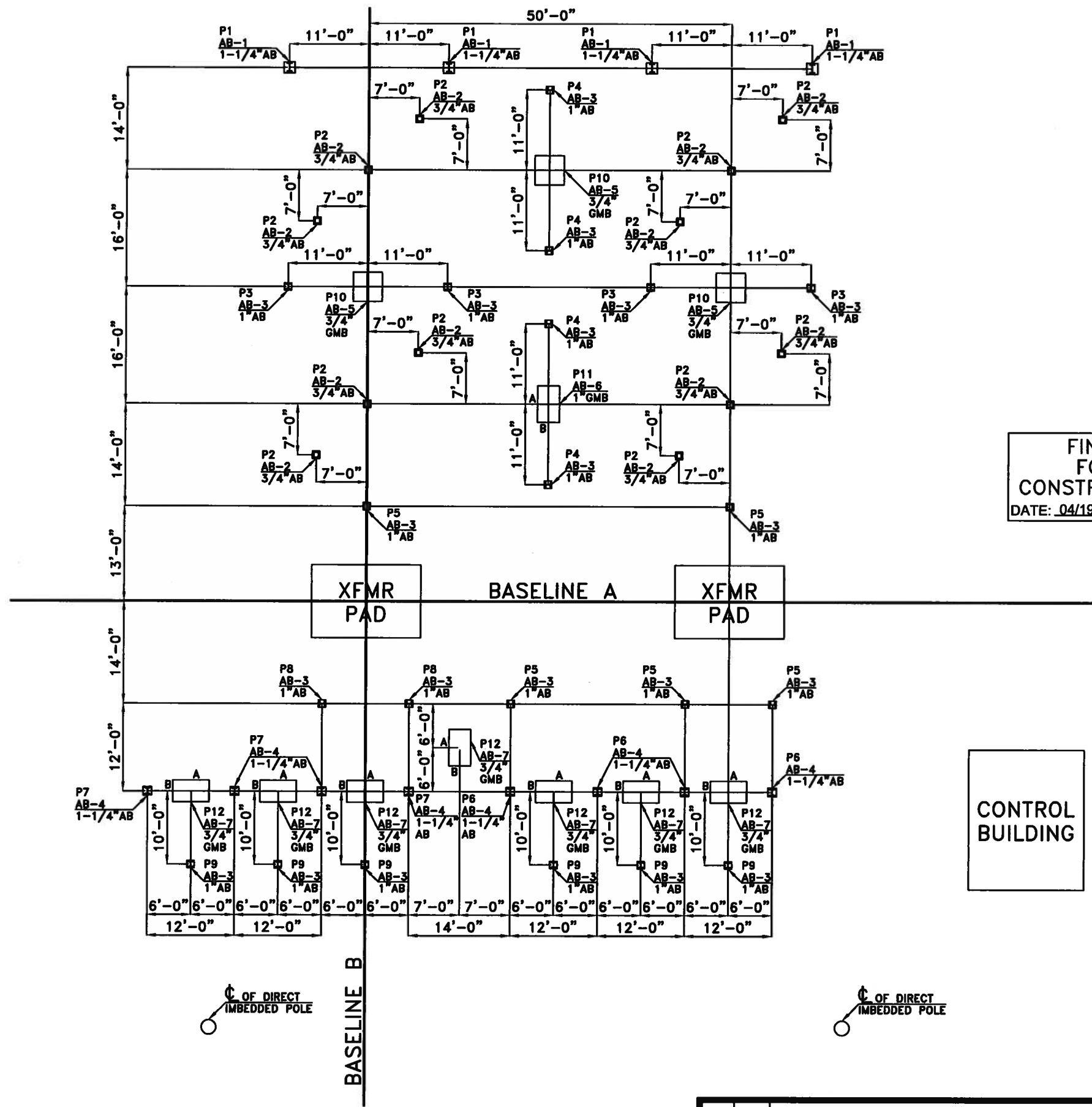


REV	DATE	CHK'D	APP'D	REVISION DESCRIPTION
0	05.17.22	KRA	KRA	ISSUED FOR BIDS

FRANKFORT PLANT BOARD
FRANKFORT, KY
CAPITAL PLAZA SUBSTATION

TRANSFORMER T54 (HOWARD)
FOUNDATION
AND OIL CONTAINMENT DETAILS

DRAW:	AWS
CHK'D:	KRA
APP'D:	DKD
SCALE:	NTS
DATE:	03.23.22
DRAWING NUMBER:	1125-03-404

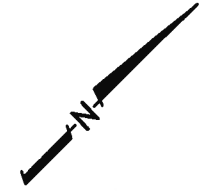


ANCHOR BOLT LAYOUT

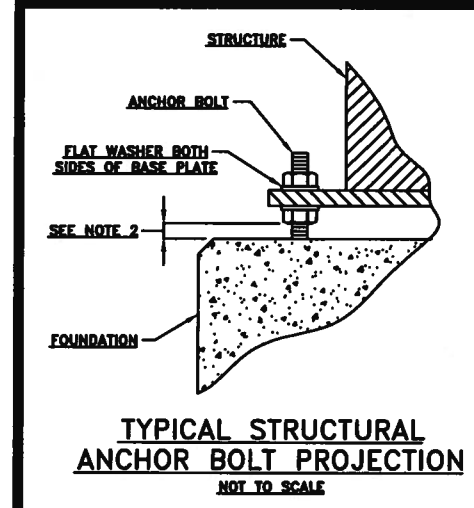
NOTES:

- 1) BASEPLATE EDGE DISTANCE IS 3" FOR 1-1/4"Ø ANCHOR BOLTS AND UP. BASEPLATE EDGE DISTANCE IS 2" FOR 1"Ø ANCHOR BOLTS AND BELOW.
- 2) STRUCTURES ARE DESIGNED TO BE INSTALLED ON LEVELING NUTS WITHOUT GROUT. THE BOTTOM NUT SHOULD BE INSTALLED NO HIGHER THAN ONE NUT THICKNESS ABOVE CONCRETE.
- 3) DO NOT PUT ANY LOAD ON ANCHOR BOLTS FOR AT LEAST 14 DAYS AFTER POURING CONCRETE.
- 4) SEE GK-6134-AB2 FOR ANCHOR BOLT DETAILS.
- 5) ALL ANCHOR BOLT MATERIAL IS HOT DIPPED GALVANIZED F-1554 GR. 55 STEEL.

FINAL FOR CONSTRUCTION
DATE: 04/19/22 BY: ACE



CONTROL BUILDING

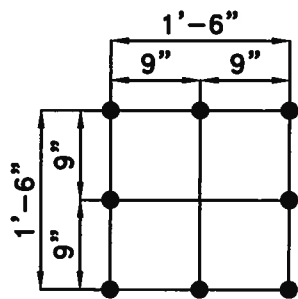


Substation Enterprises, Inc.
 145 Commercial Court, P.O. Box 2010
 Alabaster, AL 35007
 Phone: (205)685-2755, Fax: (205)685-2753

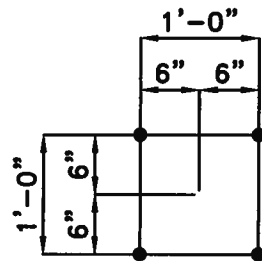
FRANKFORT PLANT BOARD
 CAPITAL PLAZA (69/15kV) SUBSTATION
 ANCHOR BOLT LAYOUT

DATE: 03-07-22	DRAWN BY: ACE	CHECKED BY: ACE	DRAWING NUMBER:
SCALE: 1/4"=1'-0"	APPROVED BY:		GK-6134-AB1

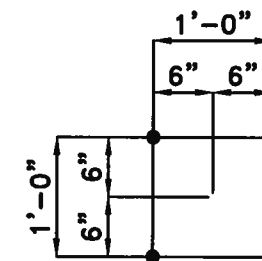
REV	DATE	DESCRIPTION
2	04/19/22	ADDED FOUNDATION MARKS
1	03/10/22	RECEIVED BREAKER DRAWINGS



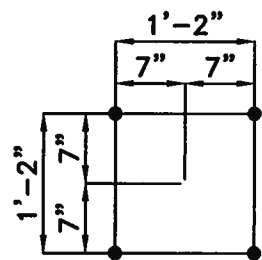
AB-1 ~ (4) PATTERNS REQ'D
(32) 1-1/4"Ø A.B.



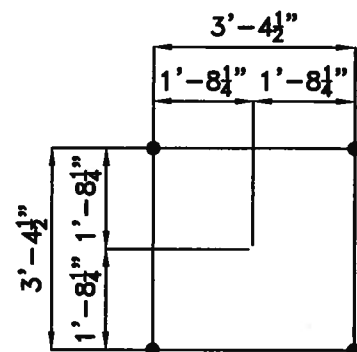
AB-2 ~ (12) PATTERNS REQ'D
(48) 3/4"Ø A.B.



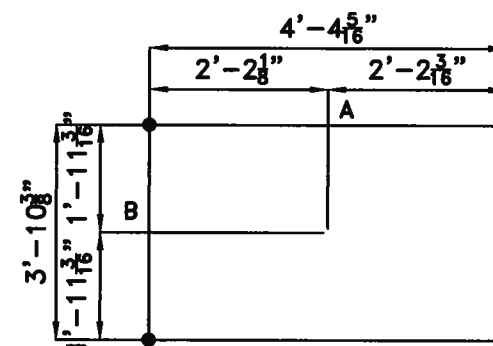
AB-3 ~ (21) PATTERNS REQ'D
(84) 1"Ø A.B.



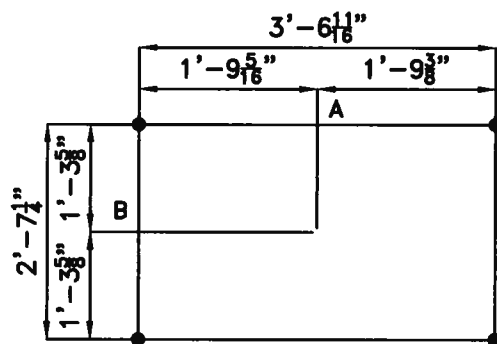
AB-4 ~ (8) PATTERNS REQ'D
(32) 1-1/4"Ø A.B.



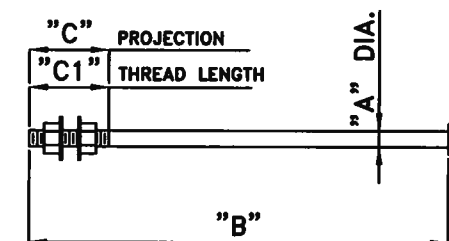
AB-5 ~ (3) PATTERNS REQ'D
(12) 3/4"Ø G.M.B.



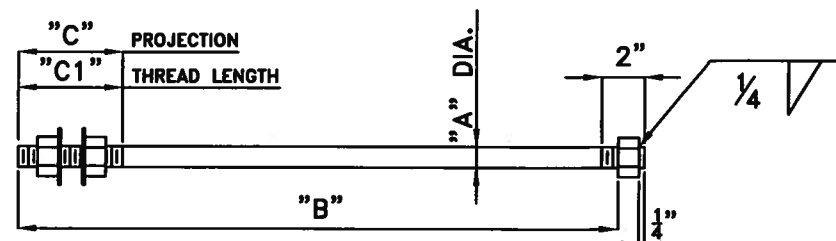
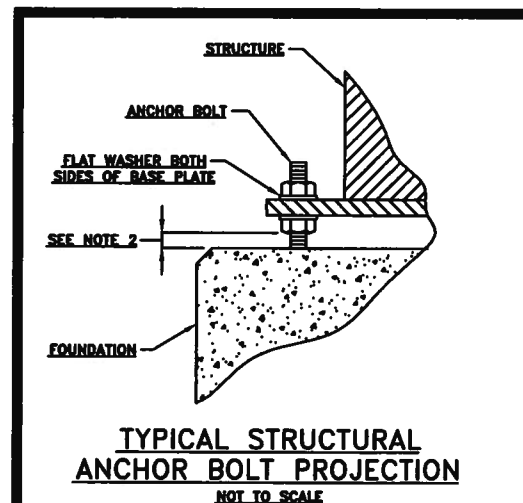
AB-6 ~ (1) PATTERNS REQ'D
(4) 1"Ø G.M.B.



AB-7 ~ (7) PATTERNS REQ'D
(28) 3/4"Ø G.M.B.



ITEM #	QTY.	"A"	"B"	"C"	"C1"
AB-5	(12)	3/4"	1'-0"	3"	5"
AB-6	(4)	1"	1'-0"	4"	5"
AB-7	(28)	3/4"	1'-0"	3"	5"



ITEM #	QTY.	"A"	"B"	"C"	"C1"	"L"
AB-1	(32)	1 1/2"	3'-4 1/2"	6"	6"	3'-6"
AB-2	(48)	3/4"	1'-11"	3 1/2"	5"	2'-0"
AB-3	(84)	1"	2'-4 3/4"	4 1/2"	5"	2'-6"
AB-4	(32)	1 1/2"	3'-4 1/2"	6"	6"	3'-6"

PLEASE NOTE TOTAL LENGTH OF ANCHOR BOLT IS LONGER THAN "B" DIMENSION, SEE "L"

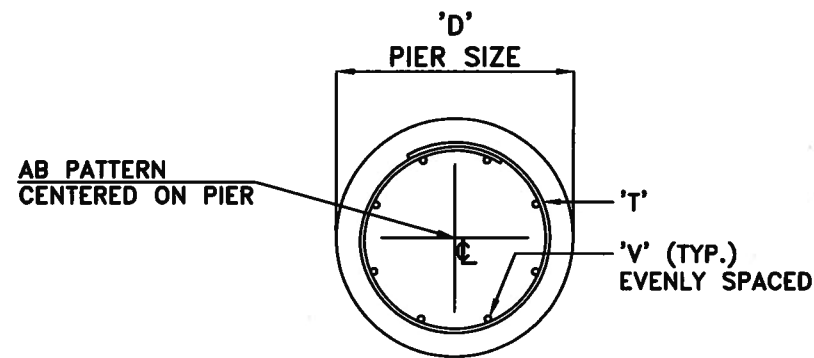
REV	DATE	DESCRIPTION
1	03/10/22	RECEIVED BREAKER DRAWINGS

Substation Enterprises, Inc.

145 Commercial Court, P.O. Box 2010
Alabaster, AL 35007
Phone: (205)685-2755, Fax: (205)685-2753

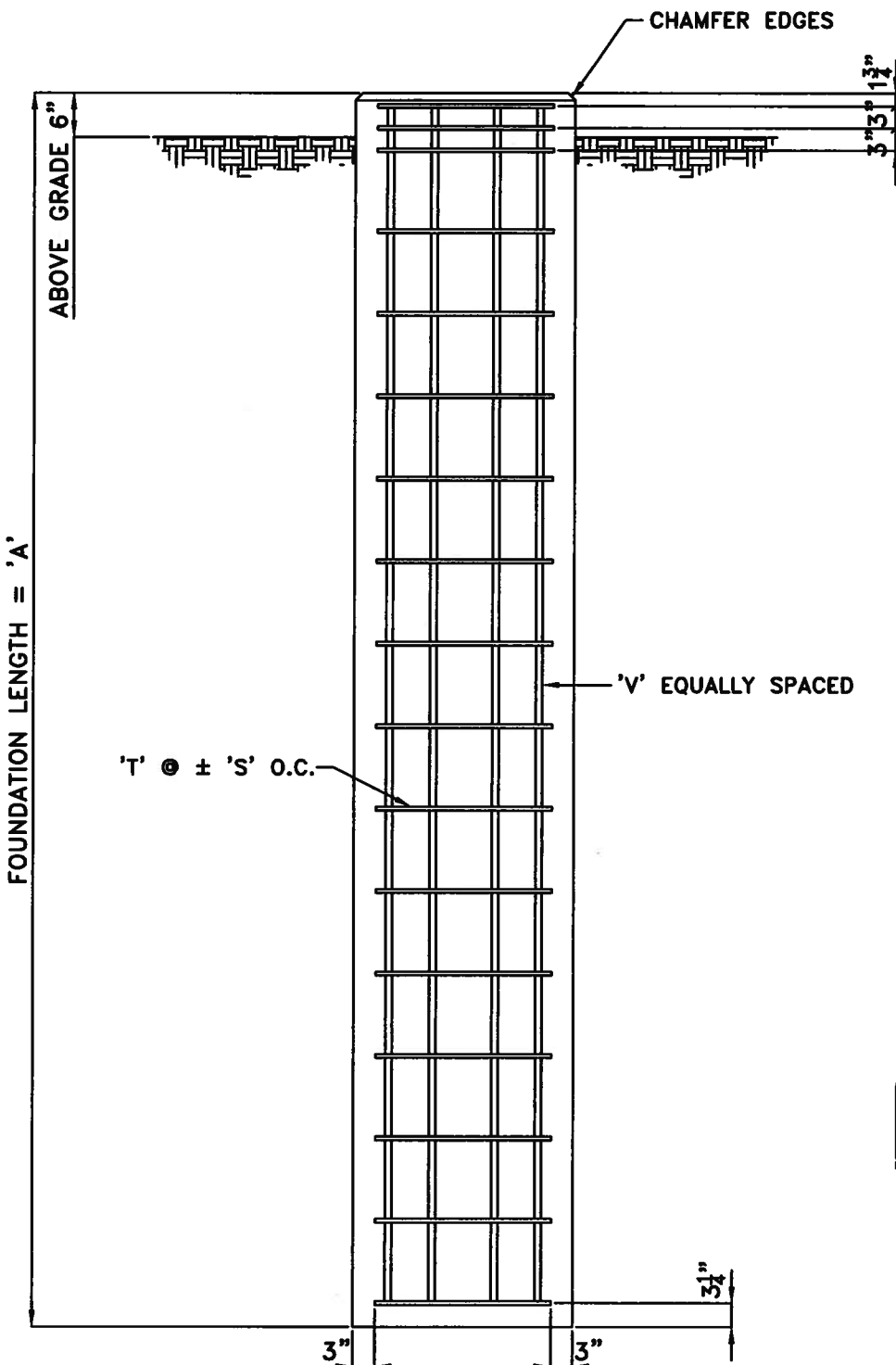
FRANKFORT PLANT BOARD
CAPITAL PLAZA (69/15kV) SUBSTATION
ANCHOR BOLT DETAILS

DATE: 03-07-22 DRAWN BY: ACE CHECKED BY: ACE DRAWING NUMBER: GK-6134-AB2
SCALE: NONE APPROVED BY:



FINAL FOR
CONSTRUCTION
DATE: 04/27/22 BY: ACE

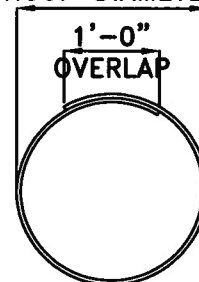
STR.	QTY.	"A"	"C"	"D"	"S"	"V" VERT. BARS	"T" TIE'S	CU. YDS. OF CONCRETE/PIER
P1	4	24'-6"	24'-1 1/2"	3'-0"	11 1/8"	(12) #8 BARS	(27) #4 TIES	6.41
P2	12	14'-3"	13'-10 1/2"	2'-6"	11 7/8"	(8) #7 BARS	(17) #4 TIES	2.59
P3	4	16'-3"	15'-10 1/2"	2'-6"	11 1/2"	(8) #7 BARS	(19) #4 TIES	2.95
P4	4	17'-3"	16'-10 1/2"	2'-6"	11 1/2"	(8) #7 BARS	(20) #4 TIES	3.14
P5	5	16'-6"	16'-1 1/2"	2'-6"	11 1/8"	(8) #7 BARS	(19) #4 TIES	3.00
P6	4	19'-3"	18'-10 1/2"	2'-6"	11 7/8"	(8) #7 BARS	(22) #4 TIES	3.50
P7	4	19'-9"	19'-4 1/2"	2'-6"	11 7/8"	(8) #7 BARS	(22) #4 TIES	3.59
P8	2	16'-9"	16'-4 1/2"	2'-6"	11 7/8"	(8) #7 BARS	(19) #4 TIES	3.05
P9	6	13'-6"	13'-1 1/2"	2'-6"	11 7/8"	(8) #7 BARS	(16) #4 TIES	2.45



TOTAL REBAR REQUIREMENTS

STR.	"C"	"V" TOTAL VERT. BARS	TIE LENGTH	"T" TOTAL TIE'S
P1	24'-1 1/2"	(48) #8 BARS	8'-10 1/4"	(108) #4 TIES
P2	13'-10 1/2"	(96) #7 BARS	7'-3 3/8"	(204) #4 TIES
P3	15'-10 1/2"	(32) #7 BARS	7'-3 3/8"	(76) #4 TIES
P4	16'-10 1/2"	(32) #7 BARS	7'-3 3/8"	(80) #4 TIES
P5	16'-1 1/2"	(40) #7 BARS	7'-3 3/8"	(95) #4 TIES
P6	18'-10 1/2"	(32) #7 BARS	7'-3 3/8"	(88) #4 TIES
P7	19'-4 1/2"	(32) #7 BARS	7'-3 3/8"	(88) #4 TIES
P8	16'-4 1/2"	(16) #7 BARS	7'-3 3/8"	(38) #4 TIES
P9	13'-1 1/2"	(48) #7 BARS	7'-3 3/8"	(96) #4 TIES

HOOP DIAMETER



REBAR MK 'T'

'C' = LENGTH

REBAR MK 'V'

NOTES:

- PIER DESIGN BASED ON BORING LOGS FROM AMERICAN ENGINEERS, INC. PROJECT NO. 221-161 DATED AUGUST 4, 2021. NEGLECT TOP THREE FEET OF SOIL. ALLOWABLE LATERAL BEARING PRESSURE OF 100 PSF/FT BASED ON SOIL REPORT AND CONVERSATIONS WITH THE ENGINEER.
- CONCRETE TO DEVELOP A MINIMUM COMPRESSIVE STRENGTH OF 4000 PSI IN 28 DAYS FROM INITIAL PLACEMENT.
- CONCRETE TO BE PLACED PER ACI 318-14.
- ALL REBAR TO BE 60 KSI.
- DO NOT TACK WELD STEEL REINFORCEMENT.
- MINIMUM OF 3" OF CONCRETE COVER OVER STEEL REINFORCEMENT UNLESS NOTED OTHERWISE.
- STEEL REINFORCEMENT TO BE PLACED PER ACI-318-14.
- FORMWORK TO BE CONSTRUCTED PER ACI 318-14.
- TOP EDGES OF EXPOSED CONCRETE SHOULD BE CHAMFERED.
- HOOP DIAMETER IS 6" LESS THAN PIER SIZE 'D'.
- DEPENDING ON SITE CONDITIONS, CASING OF THE DRILLED PIERS MAY BE REQUIRED.
- WHEN INSTALLING THE FOUNDATIONS, FOLLOW THE RECOMENDATIONS IN AMERICAN ENGINEERS, INC. PROJECT NO. 221-161.

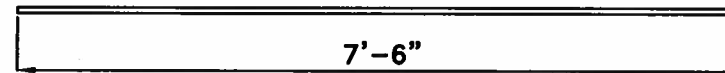
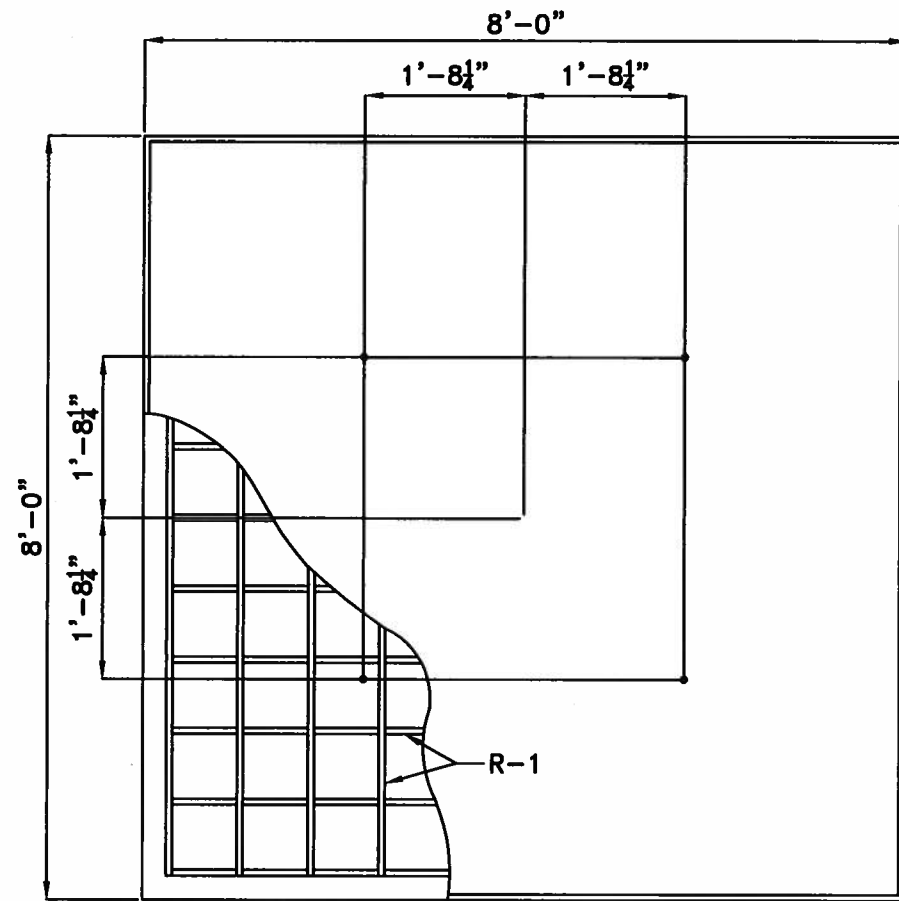
FOUNDATION DETAIL
SEE TABLE FOR DIMENSIONS

REV	DATE	DESCRIPTION

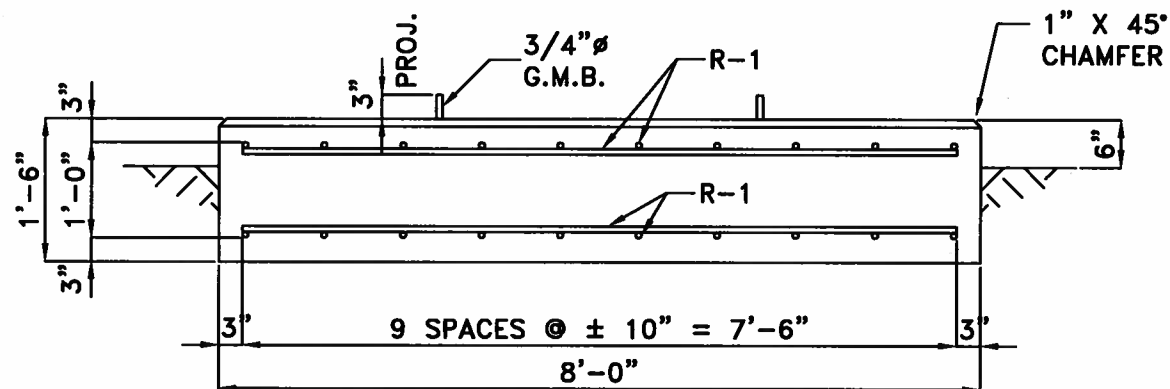
Substation Enterprises, Inc.
145 Commercial Court, P.O. Box 2010
Alabaster, AL 35007
Phone: (205)685-2755, Fax: (205)685-2753

FRANKFORT PLANT BOARD
CAPITAL PLAZA (69/15kV) SUBSTATION
FOUNDATION DETAILS

DATE: 04-14-22 DRAWN BY: ACE CHECKED BY: ACE DRAWING NUMBER:
SCALE: NONE APPROVED BY: GK-6134-FD1



R-1
(120) #6 BAR ~ 7'-6"



P10 ~ (3) REQ'D
3.56 CU. YDS./FOUNDATION

NOTES:

1. FOUNDATION DESIGN BASED ON ALLOWABLE BEARING PRESSURE OF 1,500 PSF BASED ON BORING LOGS FROM AMERICAN ENGINEERS, INC. PROJECT NO. 221-161 DATED AUGUST 4, 2021.
2. CONCRETE TO DEVELOP A MINIMUM COMPRESSIVE STRENGTH OF 4000 PSI IN 28 DAYS FROM INITIAL PLACEMENT.
3. CONCRETE TO BE PLACED PER ACI 318-14.
4. ALL REBAR TO BE 60 KSI.
5. DO NOT TACK WELD STEEL REINFORCEMENT.
6. MINIMUM OF 3" OF CONCRETE COVER OVER STEEL REINFORCEMENT UNLESS NOTED OTHERWISE.
7. STEEL REINFORCEMENT TO BE PLACED PER ACI-318-14.
8. FORMWORK TO BE CONSTRUCTED PER ACI 318-14.
9. TOP EDGES OF EXPOSED CONCRETE SHOULD BE CHAMFERED.
10. WHEN INSTALLING THE FOUNDATIONS, FOLLOW THE RECOMENDATIONS IN AMERICAN ENGINEERS, INC. PROJECT NO. 221-161.

Substation Enterprises, Inc.

145 Commercial Court, P.O. Box 2010
Alabaster, AL 35007
Phone: (205)685-2755, Fax: (205)685-2753

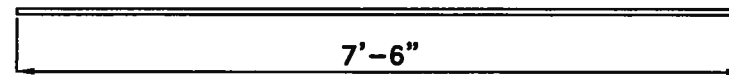
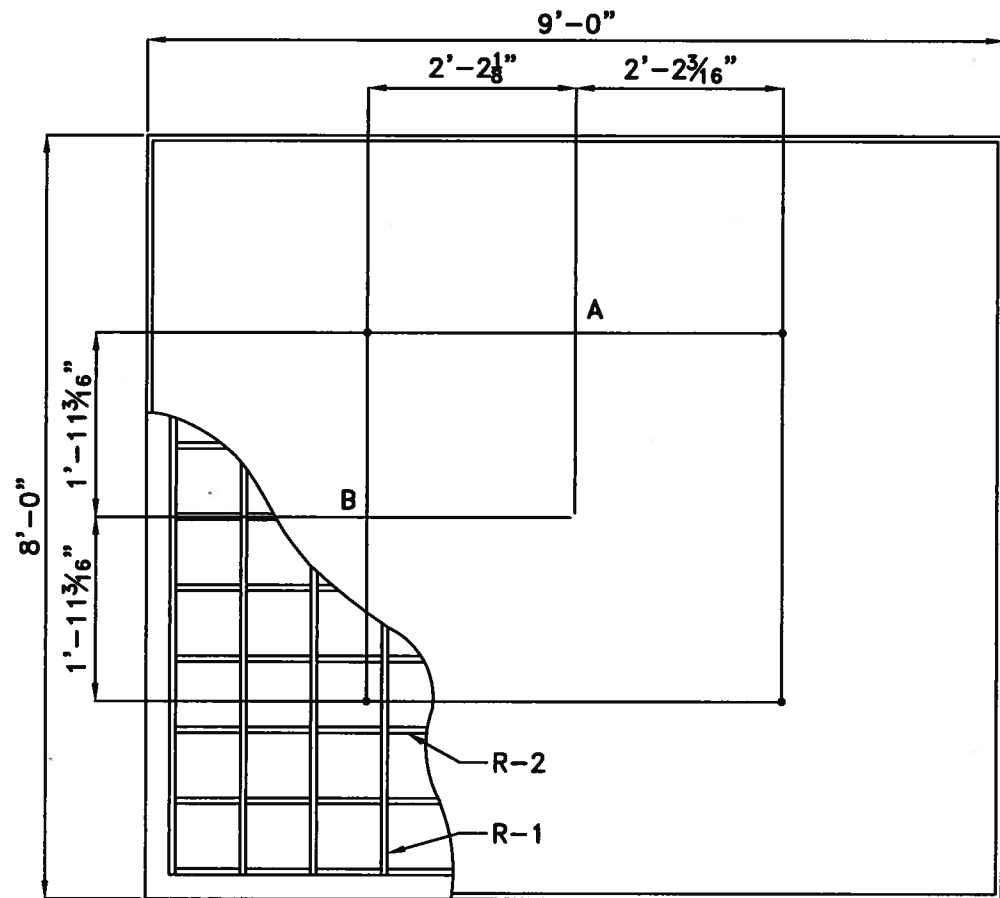
FRANKFORT PLANT BOARD

CAPITAL PLAZA (69/15kV) SUBSTATION

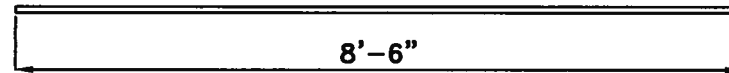
FOUNDATION DETAILS

DATE: 04-19-22 DRAWN BY: ACE CHECKED BY: ACE DRAWING NUMBER:
SCALE: NONE APPROVED BY: GK-6134-FD2

REV	DATE	DESCRIPTION



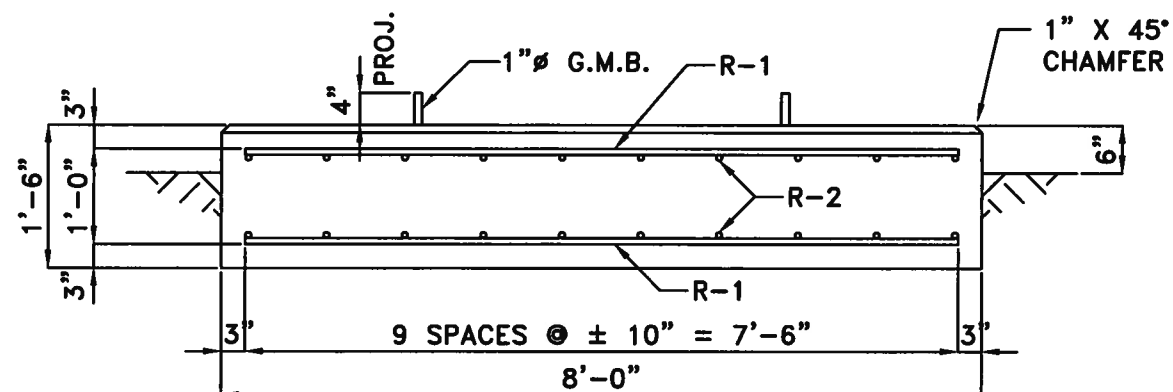
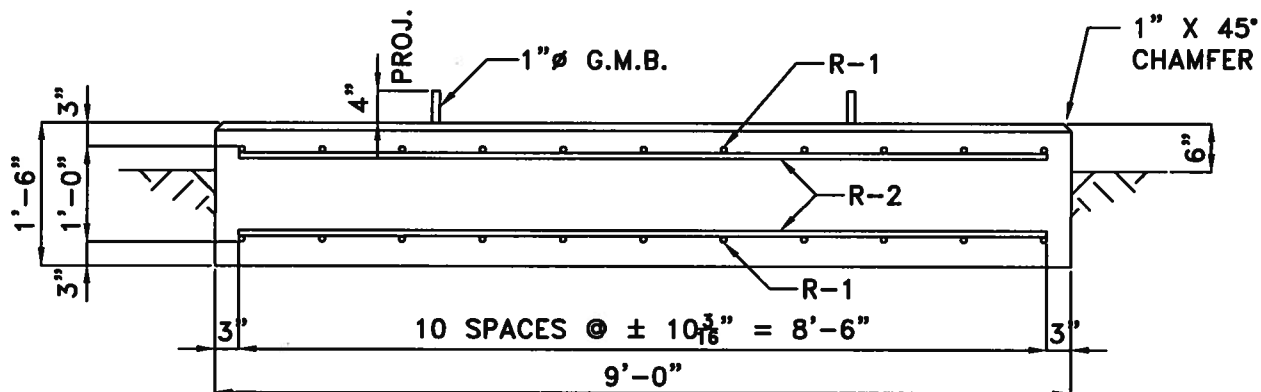
R-1
(22) #6 BAR ~ 7'-6"



R-2
(20) #6 BAR ~ 8'-6"

NOTES:

1. FOUNDATION DESIGN BASED ON ALLOWABLE BEARING PRESSURE OF 1,500 PSF BASED ON BORING LOGS FROM AMERICAN ENGINEERS, INC. PROJECT NO. 221-161 DATED AUGUST 4, 2021.
2. CONCRETE TO DEVELOP A MINIMUM COMPRESSIVE STRENGTH OF 4000 PSI IN 28 DAYS FROM INITIAL PLACEMENT.
3. CONCRETE TO BE PLACED PER ACI 318-14.
4. ALL REBAR TO BE 60 KSI.
5. DO NOT TACK WELD STEEL REINFORCEMENT.
6. MINIMUM OF 3" OF CONCRETE COVER OVER STEEL REINFORCEMENT UNLESS NOTED OTHERWISE.
7. STEEL REINFORCEMENT TO BE PLACED PER ACI-318-14.
8. FORMWORK TO BE CONSTRUCTED PER ACI 318-14.
9. TOP EDGES OF EXPOSED CONCRETE SHOULD BE CHAMFERED.
10. WHEN INSTALLING THE FOUNDATIONS, FOLLOW THE RECOMENDATIONS IN AMERICAN ENGINEERS, INC. PROJECT NO. 221-161.



P11 ~ (1) REQ'D
4.0 CU. YDS./FOUNDATION

Substation Enterprises, Inc.

145 Commercial Court, P.O. Box 2010
Alabaster, AL 35007
Phone: (205)685-2755, Fax: (205)685-2753

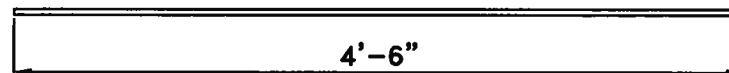
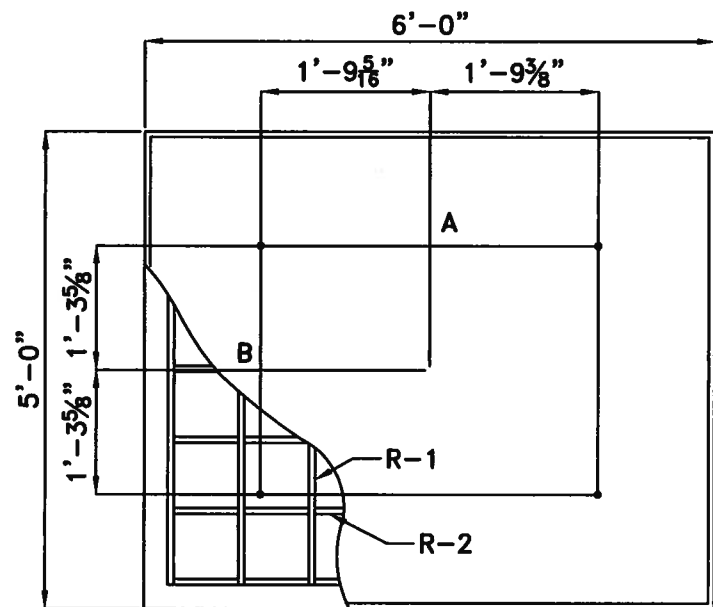
FRANKFORT PLANT BOARD

CAPITAL PLAZA (69/15kV) SUBSTATION

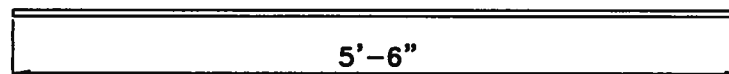
FOUNDATION DETAILS

DATE: 04-19-22 DRAWN BY: ACE CHECKED BY: ACE DRAWING NUMBER:
SCALE: NONE APPROVED BY: GK-6134-FD3

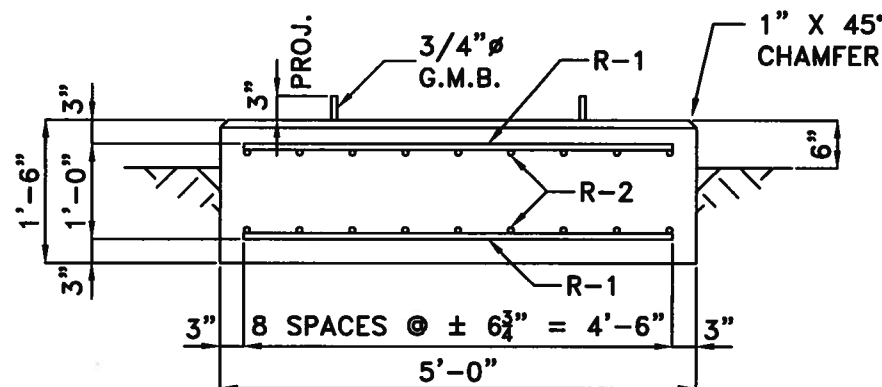
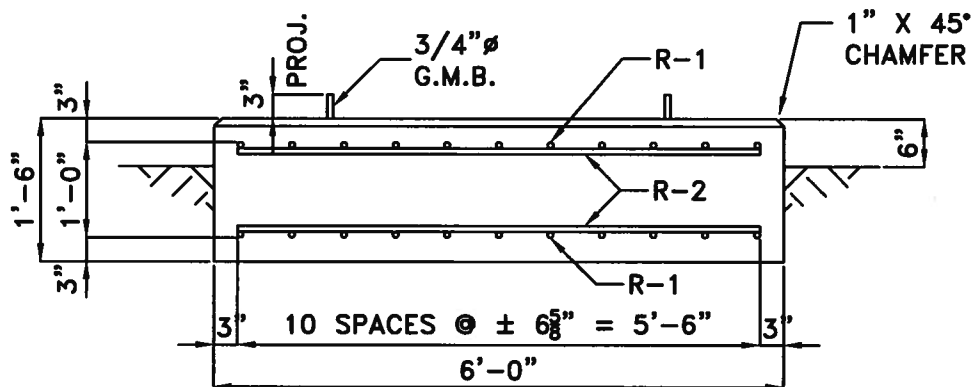
REV	DATE	DESCRIPTION



R-1
(154) #5 BAR ~ 4'-6"



R-2
(126) #5 BAR ~ 5'-6"



P12 ~ (7) REQ'D
1.67 CU. YDS./FOUNDATION

NOTES:

1. FOUNDATION DESIGN BASED ON ALLOWABLE BEARING PRESSURE OF 1,500 PSF BASED ON BORING LOGS FROM AMERICAN ENGINEERS, INC. PROJECT NO. 221-161 DATED AUGUST 4, 2021.
2. CONCRETE TO DEVELOP A MINIMUM COMPRESSIVE STRENGTH OF 4000 PSI IN 28 DAYS FROM INITIAL PLACEMENT.
3. CONCRETE TO BE PLACED PER ACI 318-14.
4. ALL REBAR TO BE 60 KSI.
5. DO NOT TACK WELD STEEL REINFORCEMENT.
6. MINIMUM OF 3" OF CONCRETE COVER OVER STEEL REINFORCEMENT UNLESS NOTED OTHERWISE.
7. STEEL REINFORCEMENT TO BE PLACED PER ACI-318-14.
8. FORMWORK TO BE CONSTRUCTED PER ACI 318-14.
9. TOP EDGES OF EXPOSED CONCRETE SHOULD BE CHAMFERED.
10. WHEN INSTALLING THE FOUNDATIONS, FOLLOW THE RECOMENDATIONS IN AMERICAN ENGINEERS, INC. PROJECT NO. 221-161.

Substation Enterprises, Inc.

145 Commercial Court, P.O. Box 2010
Alabaster, AL 35007
Phone: (205)685-2755, Fax: (205)685-2753

FRANKFORT PLANT BOARD

CAPITAL PLAZA (69/15kV) SUBSTATION

FOUNDATION DETAILS

DATE: 04-19-22 DRAWN BY: ACE CHECKED BY: ACE DRAWING NUMBER:
SCALE: NONE APPROVED BY: GK-6134-FD4

REV	DATE	DESCRIPTION