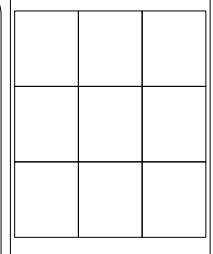
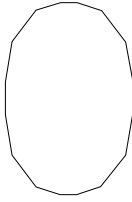


MATCH TO MAP

MATCH TO MAP



VICINITY MAP



FRANKFORT PLANT BOARD
CABLE DEPARTMENT
306 HICKORY DRIVE
FRANKFORT, KENTUCKY

F'TTH
PON 432
FRANKFORT, KENTUCKY

REV. DATE	BY

APPROV.	DATE

WORK ORDER #
23261B

SA NUMBER
01-31-107215

PON #
432

DESIGNED BY:
MKR

SCALE:
1" = 100'

METHOD:
OVH

MAP NO.

FSN NO.
10

SHEET
COVER

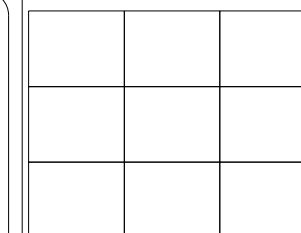
NOT FOR CONSTRUCTION

NAME	REV
FORM	01
PROJECT	FRANKFORT
DATE	01/15/15
BY	MKR

NAME	REV
FORM	01
PROJECT	FRANKFORT
DATE	01/15/15
BY	MKR

NAME	REV
FORM	01
PROJECT	FRANKFORT
DATE	01/15/15
BY	MKR

MATCH TO MAP



VICINITY MAP

FIBER SEGMENT ID LIST				
SEGMENT ID	FIBER COUNT	FOOTAGE	SPLICES	NOTES
4676	192	449	S407 TO S530	PON 432
4677	144	732	S530 TO S531	PON 432
532A	144	103	S407 TO PON432	PON 432
432B	144	103	S407 TO PON432	PON 432
4678	96	757	S531 TO S532	PON 432
4552	48	2325	S406 TO S407	BACKBONE
4675	48	903	S407 TO S529	PON 432
432-F	48	103	S407 TO PON432	PON 432

SPLICE ENCLOSURE LIST					
SPLICE ID	POLE OR PED #	LOCATION	TYPE	SPLICE COUNT	MAP #
S407	5302	769 COLONIAL TRCE	9.6" DOME	214	1
S529	5291	800 COLONIAL TRCE	COYOTE ONE	20	1
S530	5324	673 MONTCLAIR RD	9.5" DOME	158	1
S531	5330	530 WILLIAMSBURG RD	9.5" DOME	122	3
S532	5317	404 SCHENKEL LN	6.5" DOME	68	3

NOT FOR CONSTRUCTION



**FRANKFORT PLANT BOARD
CABLE DEPARTMENT**
306 HICKORY DRIVE
FRANKFORT, KENTUCKY

**F'TTH
PON 432**
FRANKFORT, KENTUCKY

REV. DATE	BY

APPROV.	DATE

WORK ORDER #
23261B

SA NUMBER
01-31-107215

PON #
432

DESIGNED BY:
MKR

SCALE:
1" = 100'

METHOD:
OVH

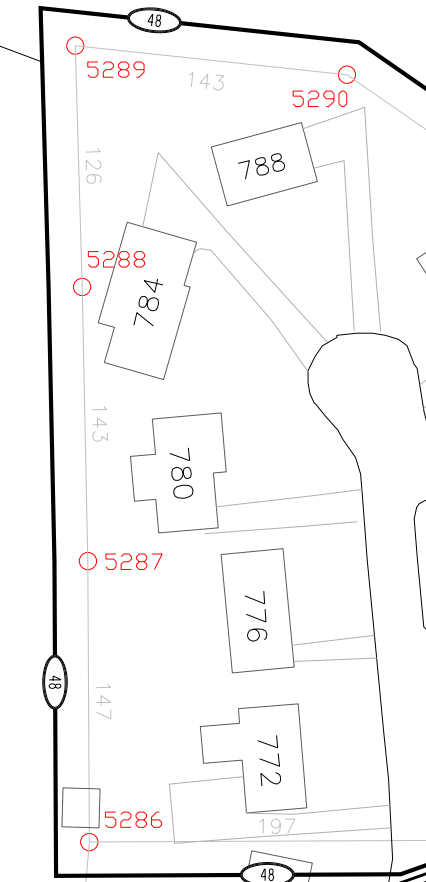
MAP NO.

FSN NO.

SHEET
LEGEND

NOT FOR CONSTRUCTION

NAME:	4675
FROM:	S407
TO:	S529
TRANS/DIST:	FTTX.DIST.A
SHEATH FTG:	903
FIBER COUNT:	48



	0	1
	2	3

VICINITY MAP

CONSTRUCTION NOTES	
SITE	ADDITION
ID# 4675	48CT, S407 TO S529 (903')
P5286	MST-08-500 (197')



**FRANKFORT PLANT BOARD
CABLE DEPARTMENT**
306 HICKORY DRIVE
FRANKFORT, KENTUCKY

**FTTH
PON 432**
FRANKFORT, KENTUCKY

REV.	DATE	BY

APPROV.	DATE

WORK ORDER #
23261B

SA NUMBER
01-31-107215

PON #
432

DESIGNED BY:
MKR

SCALE:
1" = 100'

METHOD:
OVH

MAP NO.
0

FSN NO.
10

SHEET
0 OF 4



0	1
2	3

VICINITY MAP

NAME:	4675
FROM:	S407
TO:	S529
TRANS/DIST:	FTTX_DIST.A
SHEATH FTG:	903
FIBER COUNT:	48

NAME:	432A
FROM:	S407
TO:	PON432
TRANS/DIST:	FTTX_DIST.A
SHEATH FTG:	103
FIBER COUNT:	144

NAME:	432-F
FROM:	S407
TO:	PON432
TRANS/DIST:	FTTX_DIST.A
SHEATH FTG:	103
FIBER COUNT:	48

NAME:	432B
FROM:	S407
TO:	PON432
TRANS/DIST:	FTTX_DIST.A
SHEATH FTG:	103
FIBER COUNT:	144

NAME:	4676
FROM:	S407
TO:	S530
TRANS/DIST:	FTTX_DIST.A
SHEATH FTG:	449
FIBER COUNT:	192

NAME:	4677
FROM:	S530
TO:	S531
TRANS/DIST:	FTTX_DIST.A
SHEATH FTG:	732
FIBER COUNT:	144

CONSTRUCTION NOTES	
SITE	ADDITION
ID# 4675	48CT, S407 TO S529 (903')
432A	144CT, S407 TO PON432 (103')
432B	144CT, S407 TO PON432 (103')
432-F	48CT, S407 TO PON432 (103')
ID# 4552	48CT, S406 TO S407 (2325')
ID# 4676	192CT, S407 TO S530 (449')
ID# 4677	144CT, S530 TO S531 (732')
P5304	MST-08-500 (161')
P5308	MST-04-500 (305')
P5325	MST-06-250 (119')
P5323	MST-12-750 (582')
P5291	MST-06-250 (100')
P5294	MST-06-750 (457')
P5298	MST-04-1500 (1002')
P5299	MST-04-1500 (1151')



FRANKFORT PLANT BOARD
 CABLE DEPARTMENT
 306 HICKORY DRIVE
 FRANKFORT, KENTUCKY

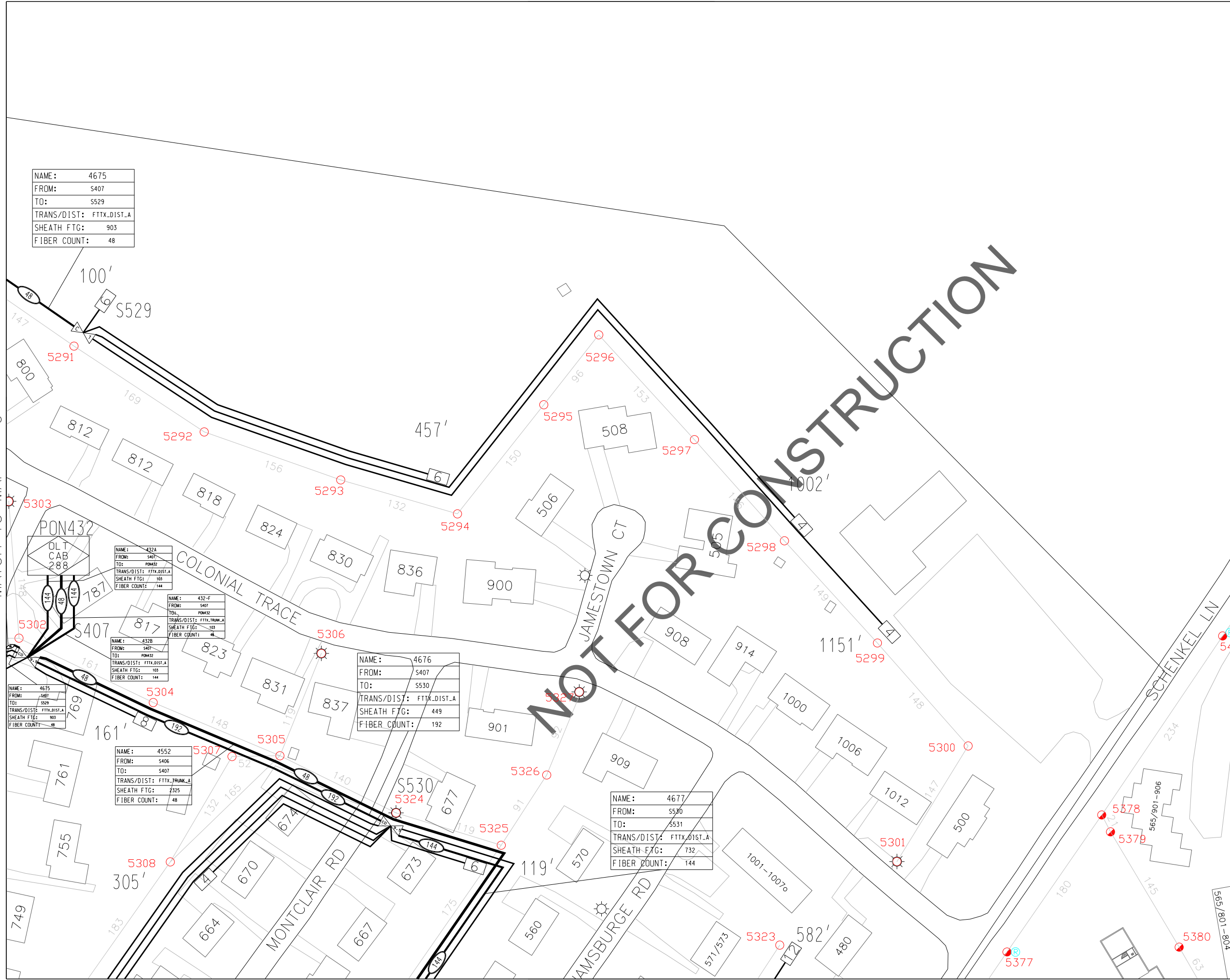
FTTH
 PON 432
 FRANKFORT, KENTUCKY

REV.	DATE	BY

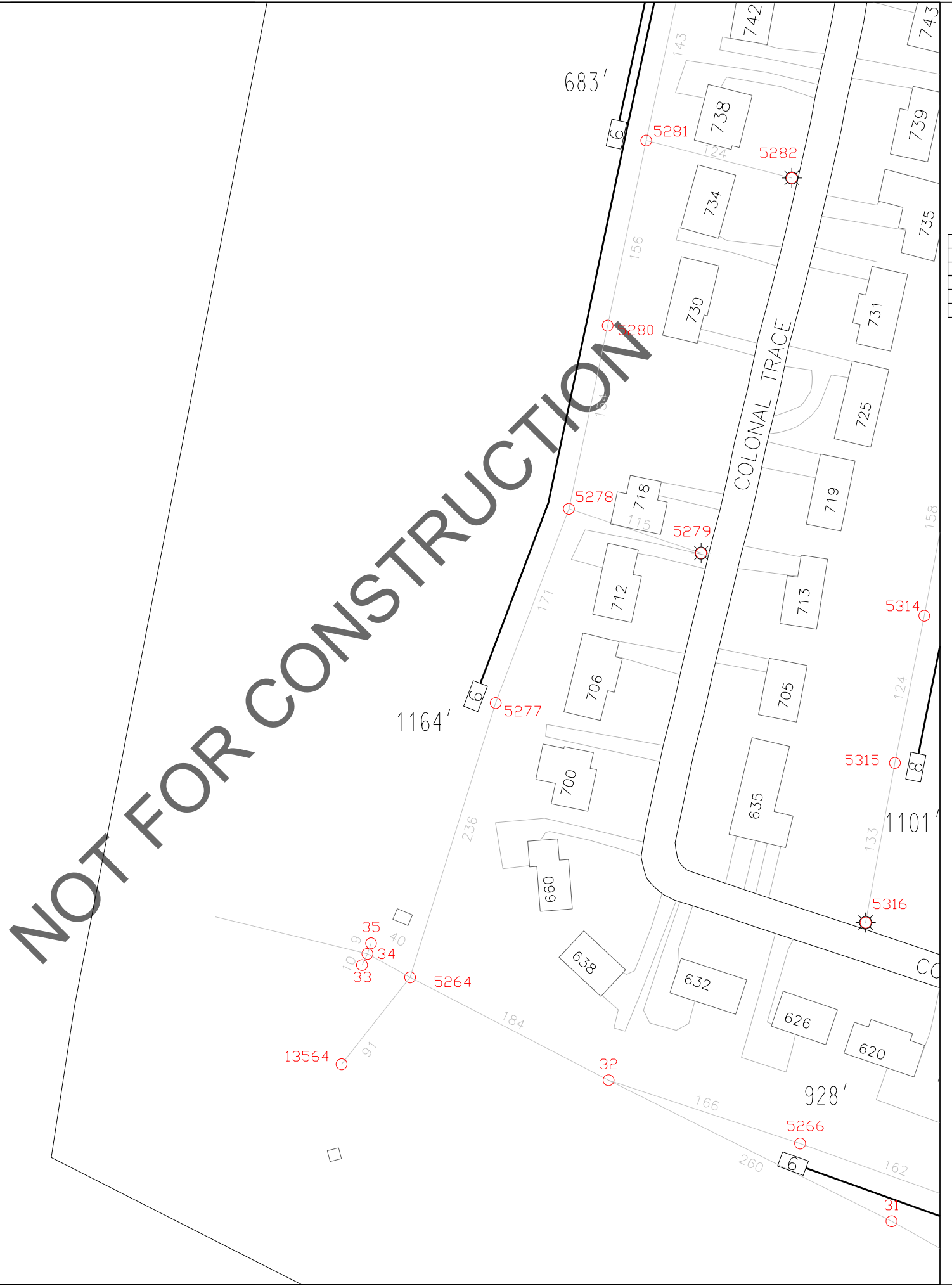
APPROV.	DATE

WORK ORDER #
23261B
 SA NUMBER
01-31-107215
 PON #
432
 DESIGNED BY:
MKR

SCALE:
1" = 100'
 METHOD:
OVH
 MAP NO.
1
 FSN NO.
10
 SHEET
1 OF 4



NOT FOR CONSTRUCTION



	0	1
	2	3
		4

VICINITY MAP

CONSTRUCTION NOTES	
SITE	ADDITION
P5281	MST-06-1000 (683')
P5277	MST-06-1500 (1164')
P5315	MST-08-1500 (1101')
P5266	MST-06-1500 (928')



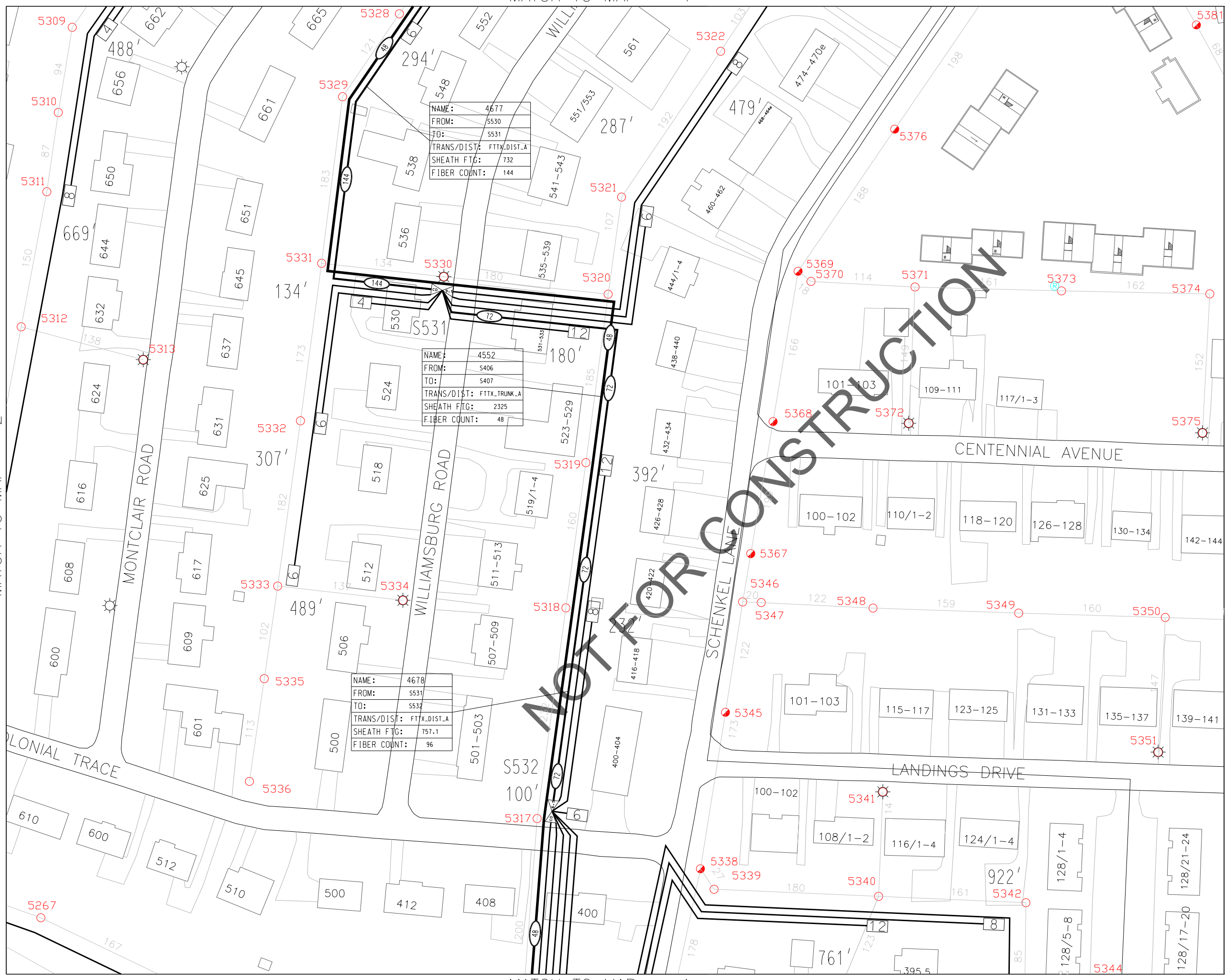
FRANKFORT PLANT BOARD
CABLE DEPARTMENT
 306 HICKORY DRIVE
 FRANKFORT, KENTUCKY

FTTH
PON 432
 FRANKFORT, KENTUCKY

REV. DATE	BY

APPROV.	DATE

WORK ORDER # 23261B
SA NUMBER 01-31-107215
PON # 432
DESIGNED BY: MKR
SCALE: 1" = 100'
METHOD: OVH
MAP NO. 2
FSN NO. 10
SHEET 2 OF 4



NAME:	4677
FROM:	S530
TO:	S531
TRANS/DIST:	FTTX_DIST.A
SHEATH FTG:	732
FIBER COUNT:	144

NAME:	4552
FROM:	S406
TO:	S407
TRANS/DIST:	FTTX_TRUNK.A
SHEATH FTG:	2325
FIBER COUNT:	48

NAME:	4678
FROM:	S531
TO:	S532
TRANS/DIST:	FTTX_DIST.A
SHEATH FTG:	757.1
FIBER COUNT:	96



0	1
2	3
	4

VICINITY MAP

CONSTRUCTION NOTES	
SITE	ADDITION
ID# 4677	144CT, S530 TO S531 (732')
ID# 4678	96CT, S531 TO S532 (757')
ID# 4552	48CT, S406 TO S407 (2325')
P5328	MST-06-500 (294')
P5322	MST-08-750 (479')
P5321	MST-06-500 (287')
P5320	MS-12-500 (180')
P5331	MST-04-250 (134')
P5311	MST-08-1000 (669')
P5332	MST-06-500 (307')
P5333	MST-06-750 (489')
P5319	MST-12-500 (392')
P5318	MST-08-500 (232')
P5317	MST-06-250 (100')
P5340	MST-12-1000 (761')
P5342	MST-08-1500 (922')
P5309	MST-04-750 (488')


FRANKFORT PLANT BOARD
CABLE DEPARTMENT
 306 HICKORY DRIVE
 FRANKFORT, KENTUCKY

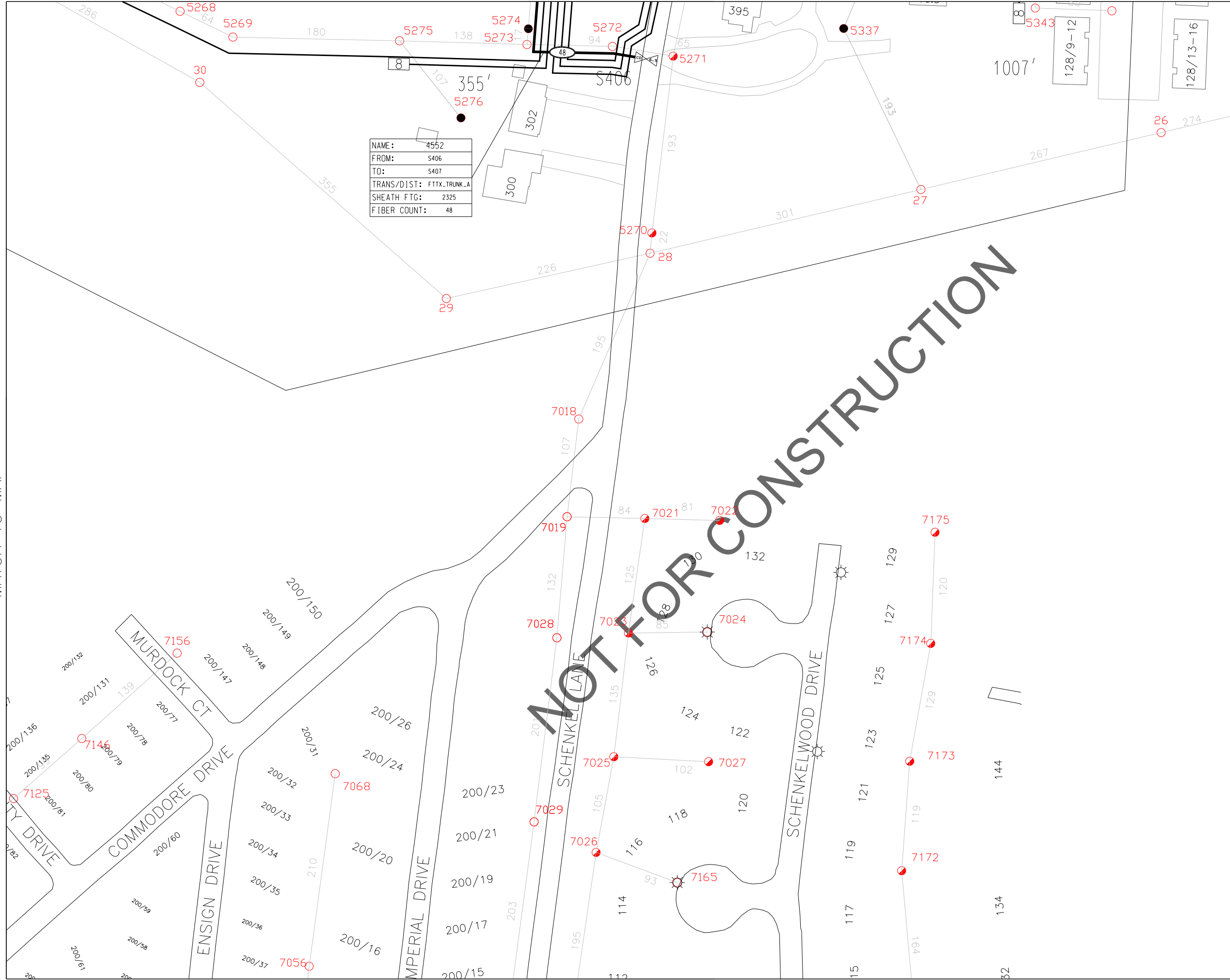
FTTH
PON 432
 FRANKFORT, KENTUCKY

REV.	DATE	BY	APPROV.	DATE
WORK ORDER # 23261B				
SA NUMBER 01-31-107215				
PON # 432				
DESIGNED BY: MKR				
SCALE: 1" = 100'				
METHOD: OVH				
MAP NO. 3				
FSN NO. 10				
SHEET 3 OF 4				

NOT FOR CONSTRUCTION

MATCH TO MAP

MATCH TO MAP 3



NAME:	4552
FROM:	S406
TO:	S407
TRANS/DIST:	FTTX_TRUNK_A
SHEATH FTG:	2325
FIBER COUNT:	48

CONSTRUCTION NOTES	
SITE	ADDITION
ID# 4552	48CT, S406 TO S407 (2325')
P5275	MST-08-500 (355')
P5343	MST-08-1500 (1007')



2	3	
	4	

VICINITY MAP

FRANKFORT PLANT BOARD
CABLE DEPARTMENT
 306 HICKORY DRIVE
 FRANKFORT, KENTUCKY

FTTH
 PON 432
 FRANKFORT, KENTUCKY

REV.	DATE	BY

APPROV.	DATE
WORK ORDER # 23261B	
SA NUMBER 01-31-107215	
PON # 432	
DESIGNED BY: MKR	
SCALE: 1" = 100'	
METHOD: OVH	
MAP NO. 4	
FSN NO. 10	
SHEET 4 OF 4	

MATCH TO MAP