

LEGEND

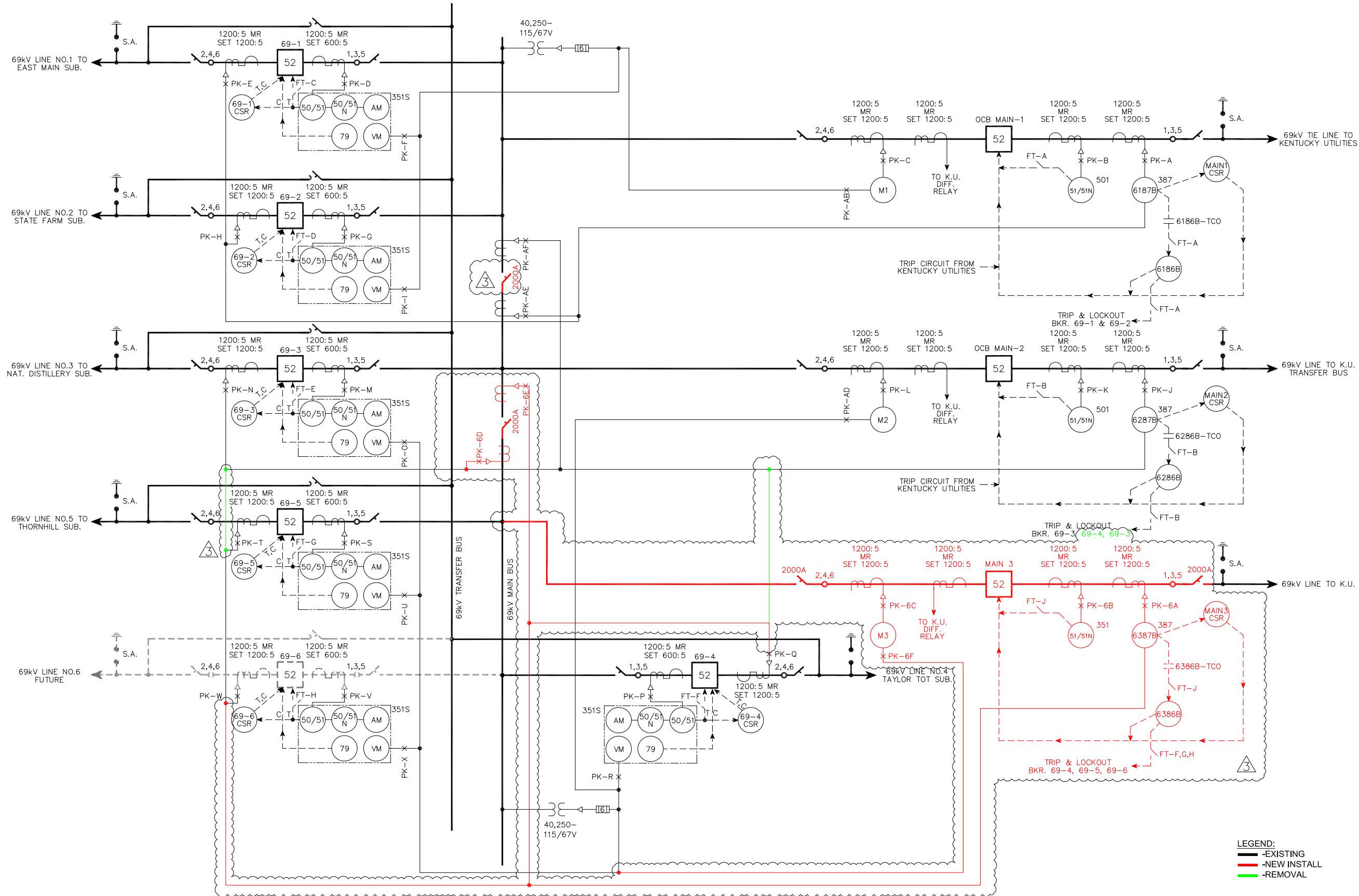
- HOOKSTICK DISCONNECT SWITCH
- GROUP OPERATED DISCONNECT SWITCH
- GROUP OPERATED DISCONNECT SWITCH WITH ARCING HORNS
- GROUP OPERATED DISCONNECT SWITCH WITH QUICK BREAK ARCING HORNS
- SURGE ARRESTER
- BUSHING CURRENT TRANSFORMER
- WOUND CURRENT TRANSFORMER
- VOLTAGE TRANSFORMER
- AUXILIARY TRANSFORMER
- LOCATED IN SUBSTATION YARD
- SELECTOR SWITCH
- PK TEST BLOCK
- PLUG TYPE CONNECTOR
- RELAY OR METER
- CIRCUIT BREAKER
- APPARATUS TERMINAL
- EXISTING EQUIPMENT
- FUTURE EQUIPMENT

DEVICE NUMBERS

- 26 LIQUID THERMAL RELAY
- 29 TRIP CUTOFF
- 30 ANNUNCIATOR RELAY
- 49 TRANSFORMER THERMAL RELAY
- 50 INST. OVERCURRENT ELEMENT
- 51 TIME OVERCURRENT ELEMENT
- 52 CIRCUIT BREAKER
- 62 TIME DELAY RELAY
- 63 FAULT PRESSURE RELAY
- 71 OIL LEVEL SWITCH
- 79 RECLOSING RELAY
- 86 LOCKOUT RELAY
- 87 DIFFERENTIAL RELAY
- SP SUDDEN PRESSURE
- * DENOTES MAKE BEFORE BREAK CONTACT

Issued for Bidding Only
Not for Construction

LEGEND:
 -EXISTING
 -NEW INSTALL
 -REMOVAL



XREFS: 2018 - 1:13pm - C:\p\local\board\plant\board\walesra\ms0357\07-00709-114.dwg

COPYRIGHT 2002, R.W. BECK, ALL RIGHTS RESERVED

REV	DATE	DES	CK'D	APPROVALS	REVISION DESCRIPTION	REV	DATE	DES	CK'D	APPROVALS	REVISION DESCRIPTION
3	6/15/18	RW	AWS		ADDED MAIN BREAKER 3						
2	4/11/14	AWS	RNJ		REPLACED BKR 69-1, REVISED BKR TERMINAL #S						
1	3/26/03				CONFORMED TO CONSTRUCTION RECORDS						
0	1/15/03	AWS	RNJ	DKD	ISSUED FOR CONSTRUCTION						

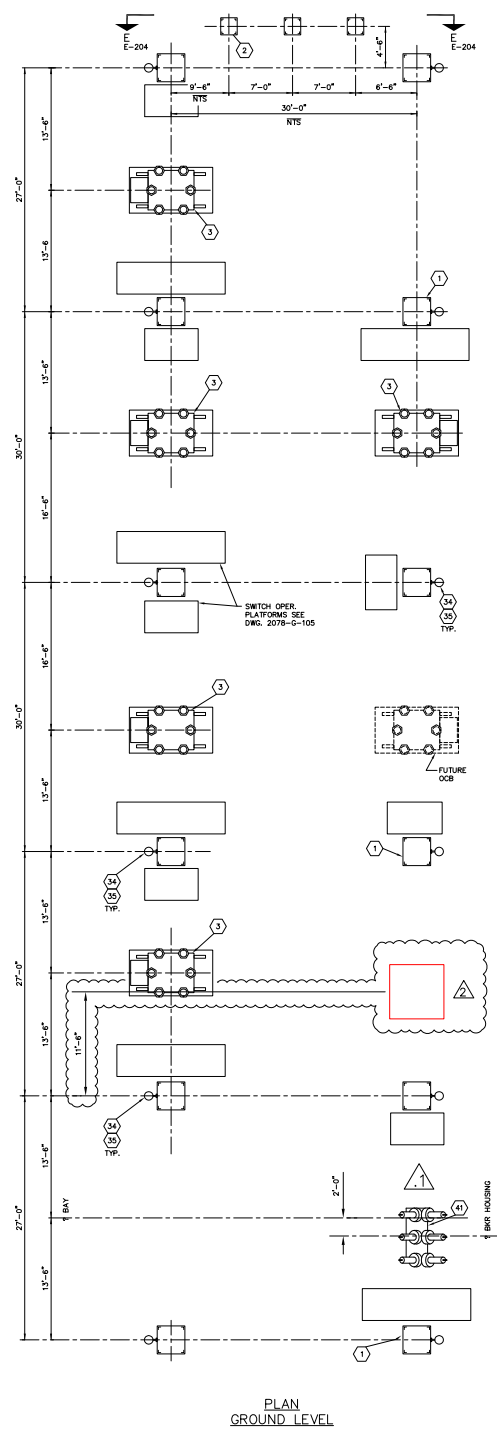
DES	CIVIL REV	ELEC REV
DKD		
DWN		
AWS		
CK'D		
RNJ		
APPD		
DKD		
	DATE	8/16/02



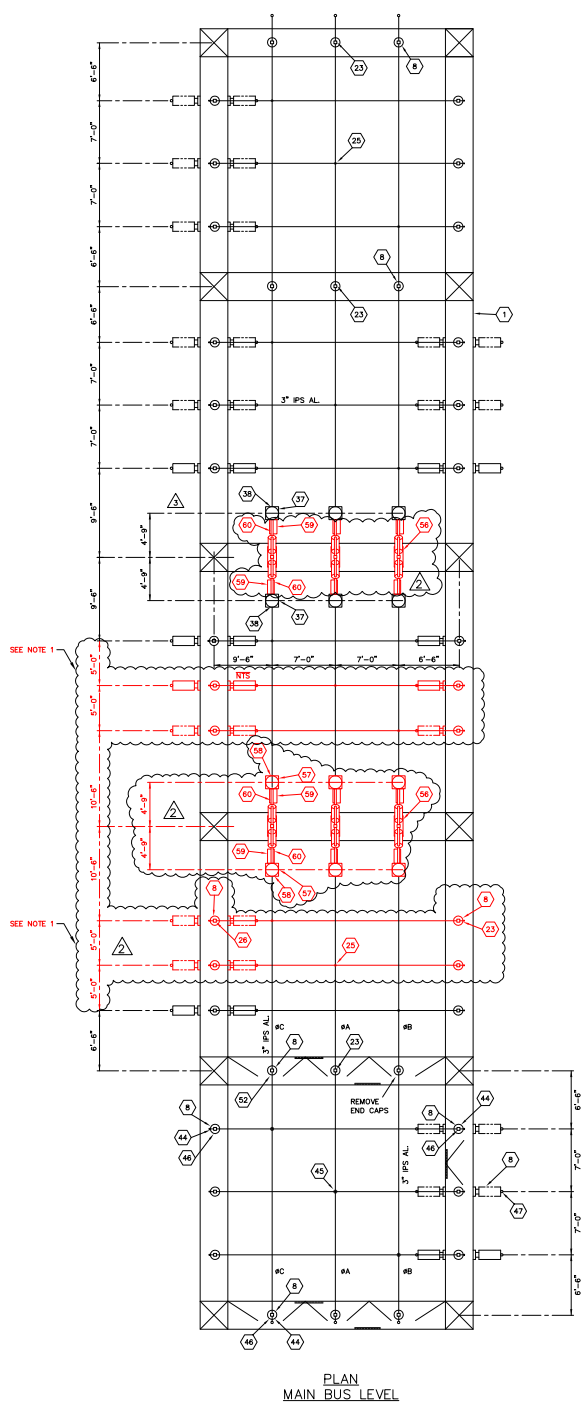
FRANKFORT ELECTRIC PLANT BOARD FRANKFORT, KENTUCKY
 MYRICK SUBSTATION
 ONE LINE DIAGRAM

FILE: 07-00709-114.dwg
 PROJECT NUMBER 07-00709-1000-1000
 DRAWING NUMBER 07-00709-114.3

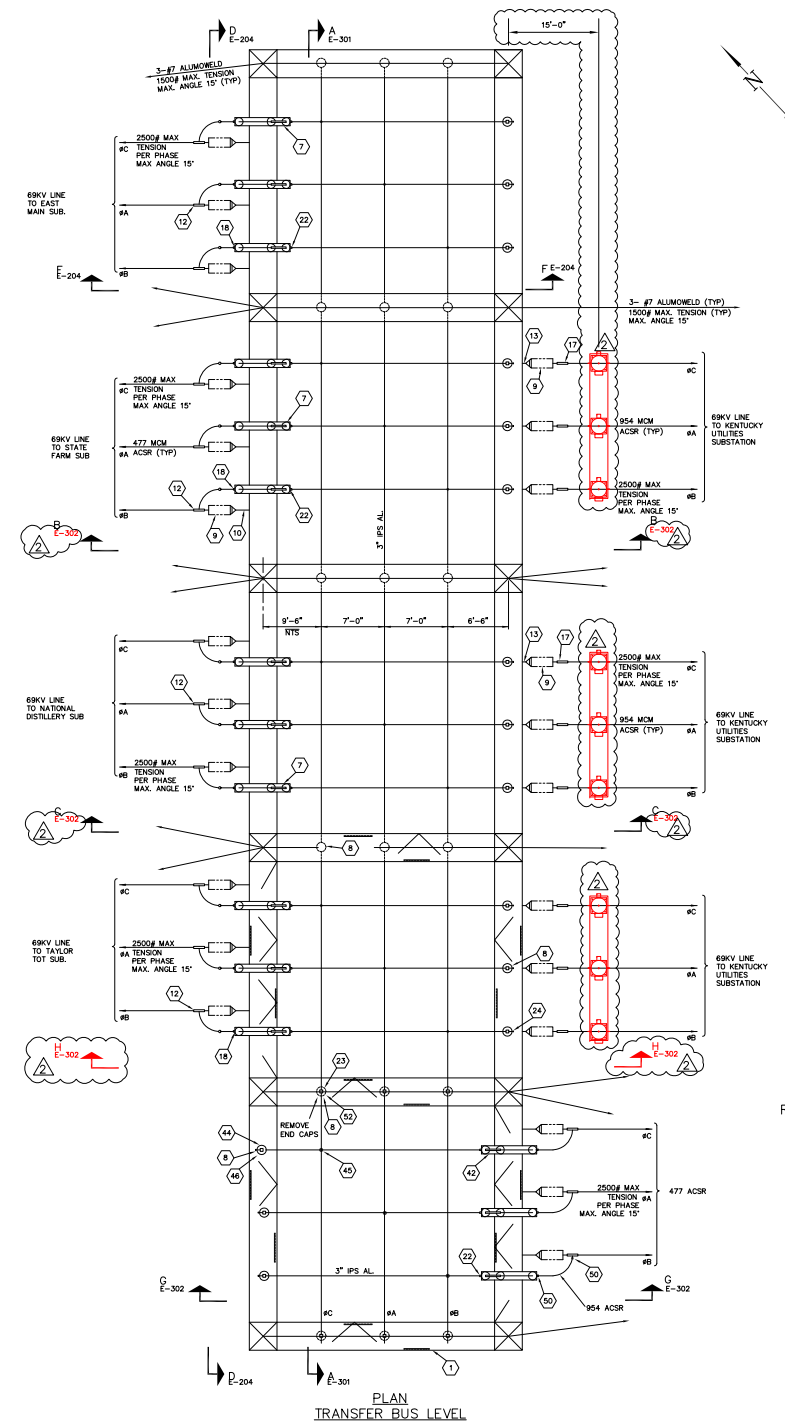
NOTES:
 1. FPB TO MODIFY EXISTING STRUCTURE/ EQUIPMENT PHASE SPACING FROM 7'-0" TO 5'-0".



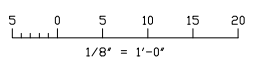
PLAN GROUND LEVEL



PLAN MAIN BUS LEVEL



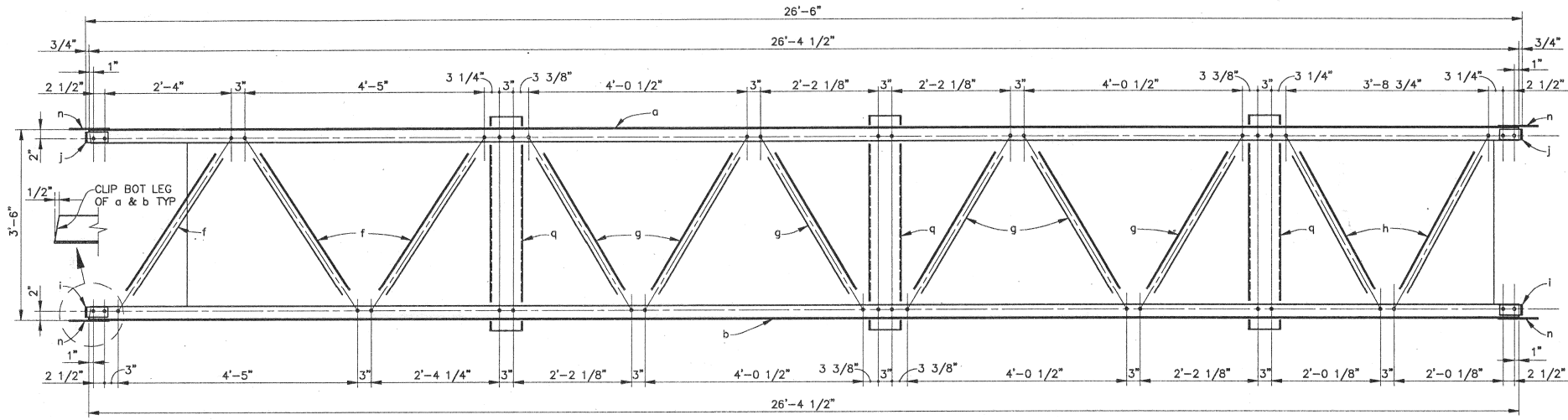
PLAN TRANSFER BUS LEVEL



Issued for Bidding Only
Not for Construction

LEGEND:
 — EXISTING
 — NEW INSTALL
 — REMOVAL

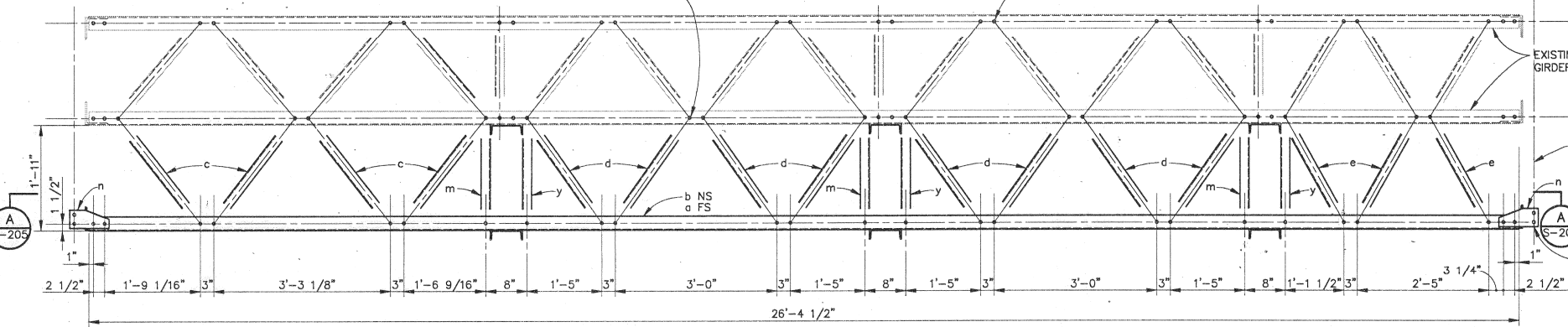
COPYRIGHT 1996, R.W. BECK, ALL RIGHTS RESERVED										FRANKFORT ELECTRIC & WATER PLANT BOARD FRANKFORT, KENTUCKY			FILE NO 00207010				
2	6/15/18	RW	AS		ADDED MAIN BREAKER 3, SWITCH, PT/CT COMBO.	DES	PAH	CIVIL	REV	---				W/O 07-00207-10000-1000			
1	1/15/97	PAH	PAH		REVISED BREAKER LOCATION. ISSUED FOR CONSTRUCTION CONTRACT.	DWN	JTC	MECH	REV	---				DWG NO		8640-E-300.2	
0	12/16/96	PAH	PAH		ISSUED FOR BIDS - STRUCTURES CONTRACT.	CK'D	APPD	DATE	12/16/96								
REV	DATE	DES	CK'D	APPROVALS	REVISION DESCRIPTION	REV	DATE	DES	CK'D	APPROVALS	REVISION DESCRIPTION						



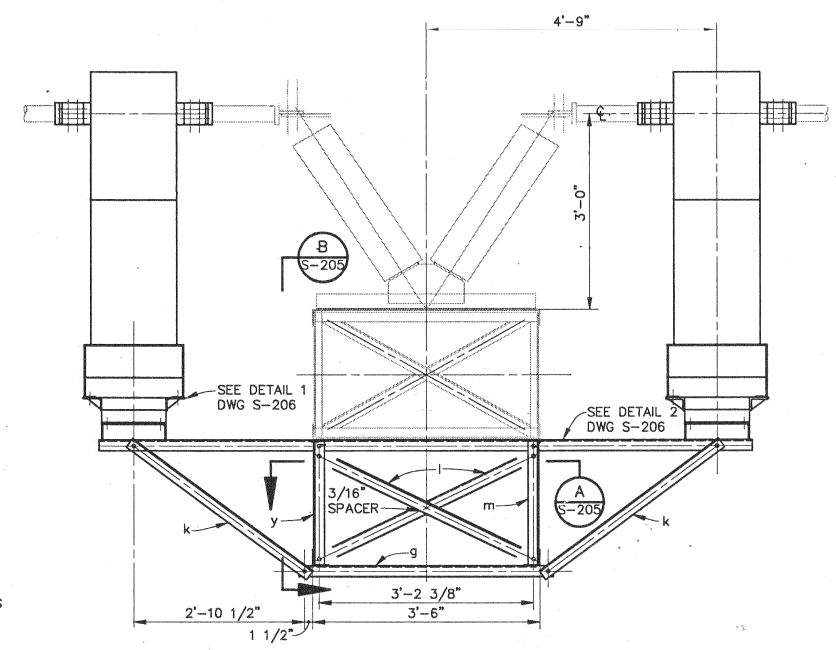
INSTALL NEW LACE BRACE BETWEEN EXISTING LACE BRACE AND CHORD LEG, TYP.

SECTION A
SCALE: 3/4"=1'-0" S-205

INSTALL 3/16" SPACER BETWEEN EXISTING LACE BRACE AND CHORD LEG, TYP.



SECTION B
SCALE: 3/4"=1'-0" S-205



GIRDER AND C.T. ELEVATION
SCALE: 3/4"=1'-0"

NOTES:

- STRUCTURAL SHAPE STEEL: ASTM A 36
STRUCTURAL TUBING: ASTM A 500
- HOT DIP GALVANIZE ALL STEEL IN ACCORDANCE WITH ASTM A123 AFTER FABRICATION.
- BOLTS: ASTM A 394, 5/8" DIAMETER UNLESS NOTED OTHERWISE.
BOLT HOLES: 11/16" DIAMETER UNLESS NOTED OTHERWISE.
- IDENTIFY EACH MARK PIECE BY WRITING THE MARK LETTER DESIGNATION ON THE PIECE WITH A BLACK WAX MARKER AFTER FABRICATION.

**ISSUED FOR
BIDDING ONLY
NOT FOR
CONSTRUCTION**

COPYRIGHT 1995, R.W. BECK, ALL RIGHTS RESERVED

REV	DATE	DES	CK'D	APPROVALS	REVISION DESCRIPTION	REV	DATE	DES	CK'D	APPROVALS	REVISION DESCRIPTION
0	7-27-95				ISSUED FOR BIDS						

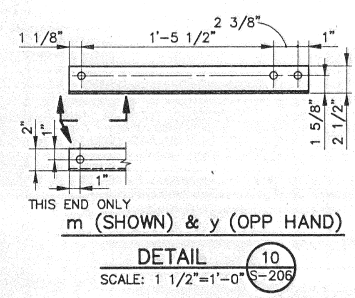
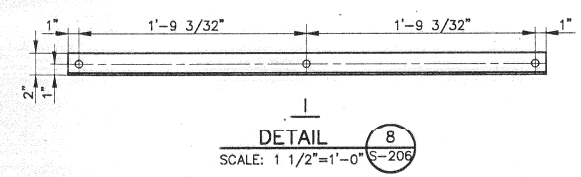
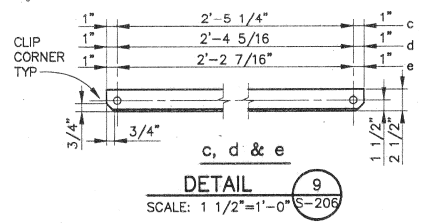
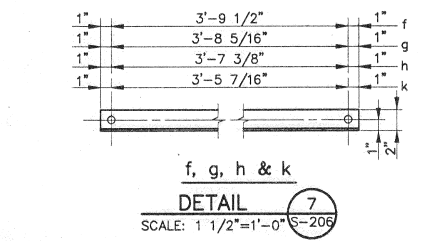
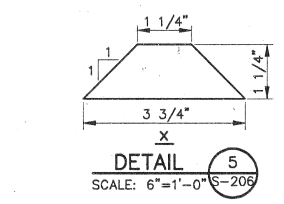
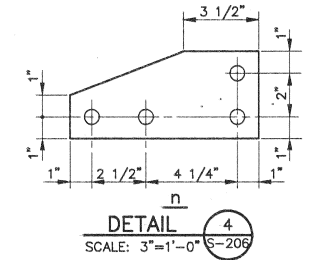
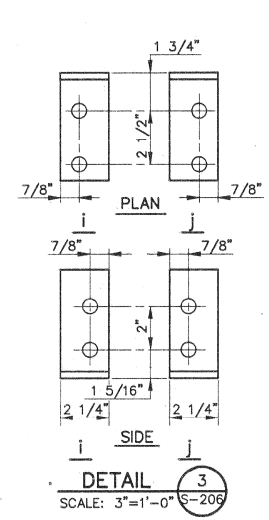
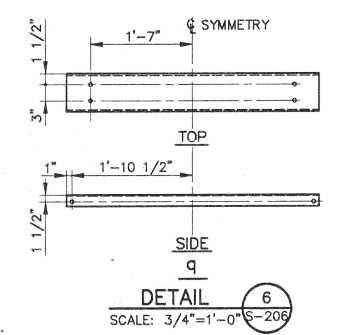
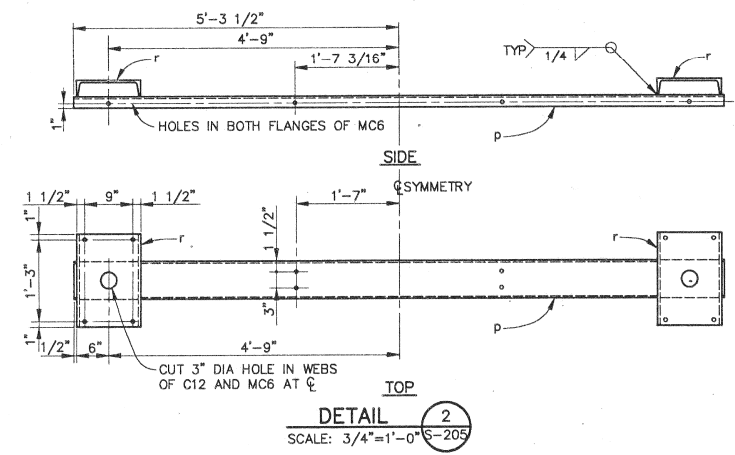
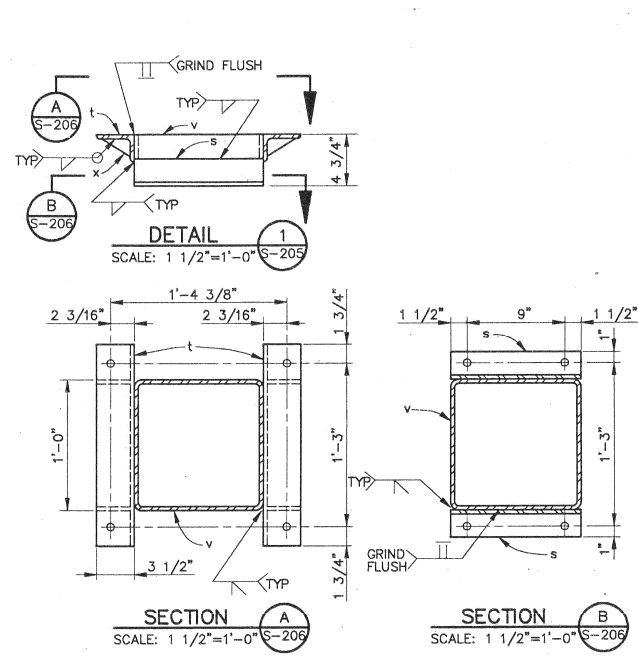
DES	GH	CIVIL	REV	ELEC	REV
DWN	CAD	MECH	REV	STRUC	REV
CK'D	APPD	DATE	7-27-95		



FRANKFORT ELECTRIC AND WATER PLANT BOARD FRANKFORT, KENTUCKY
MYRICK SUBSTATION
SUBSTATION MODIFICATIONS
CURRENT TRANSFORMER SUPPORT DETAILS

FILE NO	31250201
W/O	EJ-3125-BA1-AA
DWG NO	3125-S-205.0

SCS K: WAHQ: WAHQ: 001 7-27-95 @ 13.09



MARK	QTY	DESCRIPTION	LENGTH		COMMENTS
			FT	IN	
a	1	L3x3x3/16	26	4 1/2	
b	1	L3x3x3/16	26	4 1/2	
c	8	L2 1/2x2x3/16	2	7 1/4	
d	16	L2 1/2x2x3/16	2	6 5/16	
e	6	L2 1/2x2x3/16	2	4 7/16	
f	3	L2x2x3/16	3	11 1/2	
g	6	L2x2x3/16	3	10 5/16	
h	2	L2x2x3/16	3	9 3/8	
i	2	L5x5x5/16	0	2 1/4	
j	2	L5x5x5/16	0	2 1/4	OPP HAND AS i
k	12	L2x2x3/16	3	7 7/16	
l	12	L2x2x3/16	3	8 3/16	
m	6	L2 1/2x2x3/16	1	10	
n	4	PL1/4x4	0	8 3/4	
p	3	MC6x12	10	7	
q	3	MC6x12	3	11	
r	6	C12x25	1	5	SHOP WELD TO p
s	12	L2 1/2x2 1/2x3/8	1	0	SHOP WELD TO v
t	12	L3 1/2x2 1/2x3/8	1	6 1/2	SHOP WELD TO v
v	6	TS12x12x.250	0	4 3/4	
x	24	BAR3/8x1 1/4	0	3 1/8	SHOP WELD TO t
y	6	L2 1/2x2x3/16	1	10	OPP HAND AS m

GALVANIZED HARDWARE
 212 - 5/8" DIA x 1 1/2 HH BOLTS & HN
 16 - 5/8" DIA x 2 HH BOLTS, HN, & PALNUT
 36 - 3/16" x 1 1/4 FLAT WASHER FOR 5/8" DIA BOLT

ISSUED FOR BIDDING ONLY
NOT FOR CONSTRUCTION