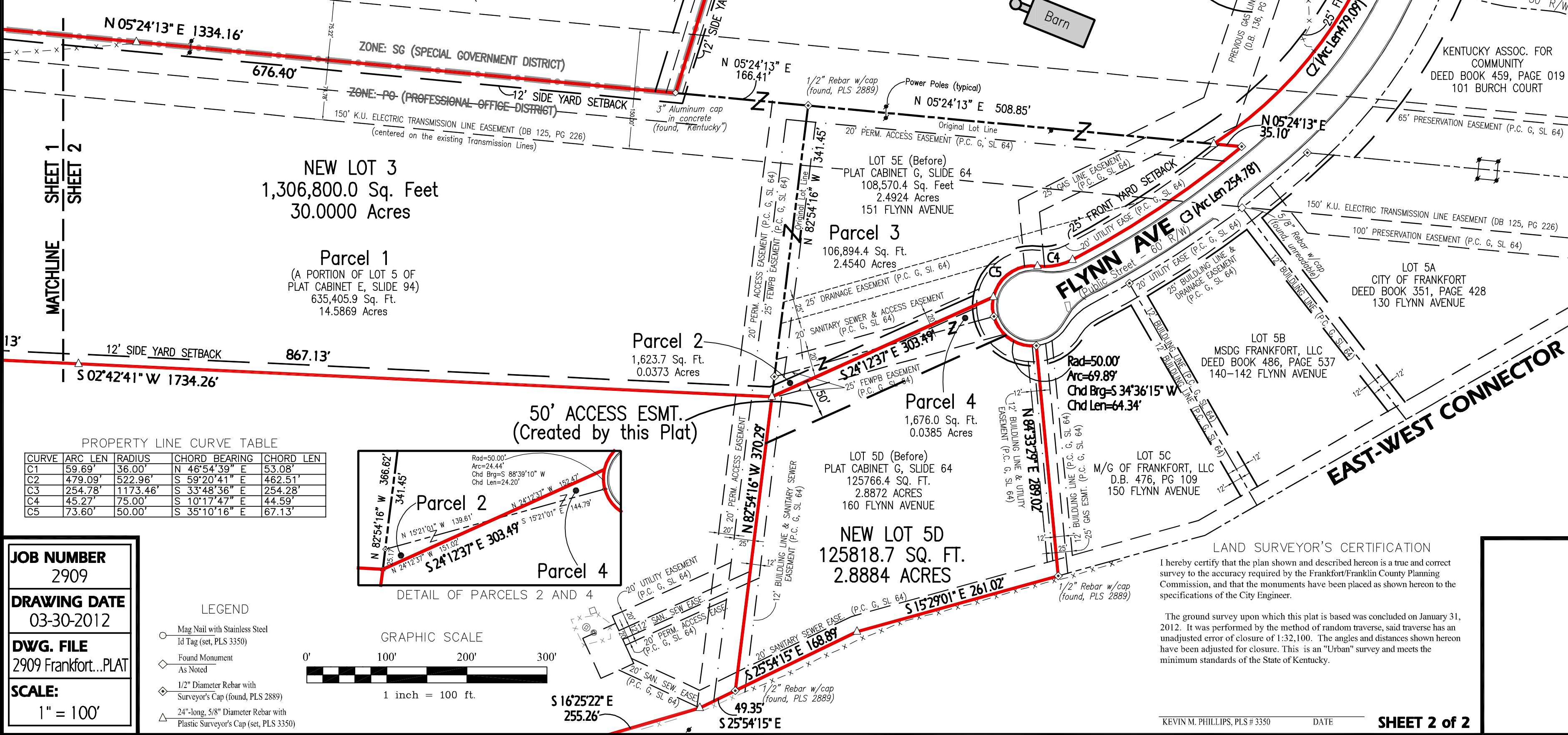


SITE STATISTICS

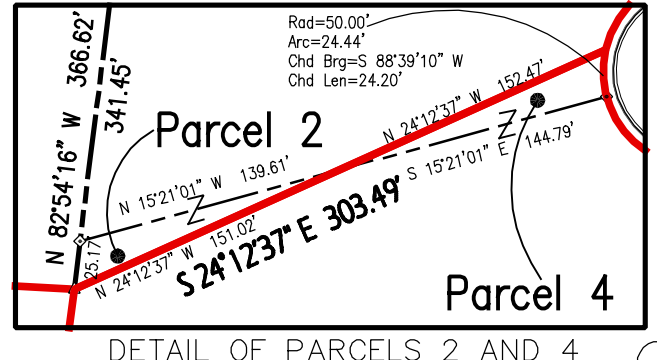
Number Of Lots Before: 4 After: 3

Lot (before)	Plat Cab. G, Slide 64	83.358 Acres (per Plat)
-Parcel 1	635,405.9 Sq. Ft.	14.5869 Acres
Lot 5 (Remaining-By Deed)		68.77 Acres +/-
Lot 5e (before)	108,570.4 Sq. Ft.	2.4924 Acres
-Parcel 4	1,676.0 Sq. Ft.	0.0385 Acres
Parcel 3	106,894.4 Sq. Ft.	2.4540 Acres
Lot 3 (before)	562,876.0 Sq. Ft.	12.9219 Acres
+Parcel 1	635,405.9 Sq. Ft.	14.5869 Acres
+Parcel 3	106,894.4 Sq. Ft.	2.4540 Acres
+Parcel 2	1,623.7 Sq. Ft.	0.0373 Acres
New Lot 3	1,306,800.0 Sq. Ft.	30.0000 Acres
Lot 5d (before)	125,766.4 Sq. Ft.	2.8872 Acres
-Parcel 2	1,623.7 Sq. Ft.	0.0373 Acres
+Parcel 4	1,676.0 Sq. Ft.	0.0385 Acres
Lot 5d (after)	125,818.7 Sq. Ft.	2.8884 Acres



PROPERTY LINE CURVE TABLE

CURVE	ARC LEN	RADIUS	CHORD BEARING	CHORD LEN
C1	59.69'	36.00'	N 46°54'39" E	53.08'
C2	479.09'	522.96'	S 59°20'41" E	462.51'
C3	254.78'	1173.46'	S 33°48'36" E	254.28'
C4	45.27'	75.00'	S 10°17'47" E	44.59'
C5	73.60'	50.00'	S 35°10'16" E	67.13'



JOB NUMBER
2909

DRAWING DATE
03-30-2012

DWG. FILE
2909 Frankfort...PLAT

SCALE:
1" = 100'

LEGEND

- Mag Nail with Stainless Steel Id Tag (set, PLS 3350)
- Found Monument As Noted
- 1/2" Diameter Rebar with Surveyor's Cap (found, PLS 2889)
- 24"-long, 5/8" Diameter Rebar with Plastic Surveyor's Cap (set, PLS 3350)

GRAPHIC SCALE

0' 100' 200' 300'

1 inch = 100 ft.

LAND SURVEYOR'S CERTIFICATION

I hereby certify that the plan shown and described hereon is a true and correct survey to the accuracy required by the Frankfort/Franklin County Planning Commission, and that the monuments have been placed as shown hereon to the specifications of the City Engineer.

The ground survey upon which this plat is based was concluded on January 31, 2012. It was performed by the method of random traverse, said traverse has an unadjusted error of closure of 1:32,100. The angles and distances shown hereon have been adjusted for closure. This is an "Urban" survey and meets the minimum standards of the State of Kentucky.